

## Product datasheet for **TA313417**

### Actin (ACTA1) Rabbit Polyclonal Antibody

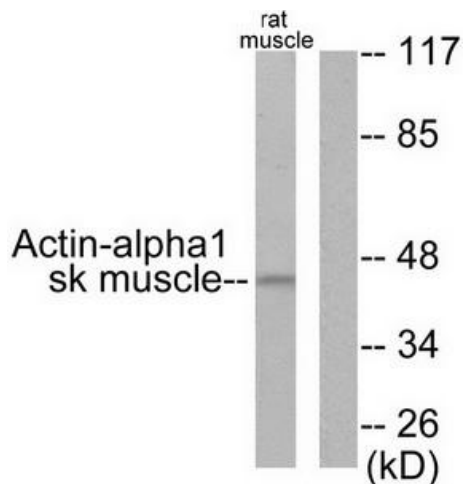
#### Product data:

Product Type:	Primary Antibodies
Applications:	IHC, WB
Recommended Dilution:	WB: 1:500~1:3000, IHC: 1:50~1:100, ELISA: 1:20000
Reactivity:	Human, Mouse, Rat
Host:	Rabbit
Isotype:	IgG
Clonality:	Polyclonal
Immunogen:	The antiserum was produced against synthesized peptide derived from human Actin-a-1.
Formulation:	Phosphate buffered saline (without Mg <sup>2+</sup> and Ca <sup>2+</sup> ), pH 7.4, 150mM NaCl, 0.02% sodium azide and 50% glycerol.
Concentration:	lot specific
Purification:	The antibody was affinity-purified from rabbit antiserum by affinity-chromatography using epitope-specific immunogen.
Conjugation:	Unconjugated
Storage:	Store at -20°C as received.
Stability:	Stable for 12 months from date of receipt.
Gene Name:	actin, alpha 1, skeletal muscle
Database Link:	<a href="#">NP_001091</a> <a href="#">Entrez Gene 11459 Mouse</a> <a href="#">Entrez Gene 29437 Rat</a> <a href="#">Entrez Gene 58 Human</a> <a href="#">P68133</a>
Synonyms:	ACTA; ASMA; CFTD; CFTD1; CFTDM; MPFD; NEM1; NEM2; NEM3; SHPM
Note:	Actin--1 antibody detects endogenous levels of total Actin--1 protein.
Protein Families:	Stem cell - Pluripotency

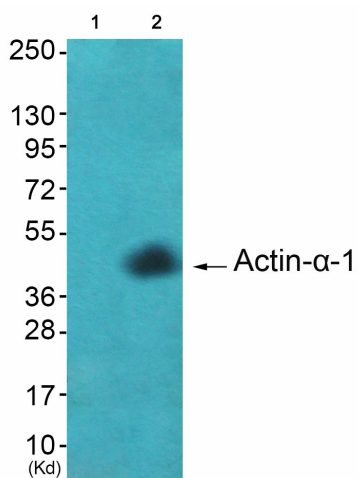


[View online »](#)

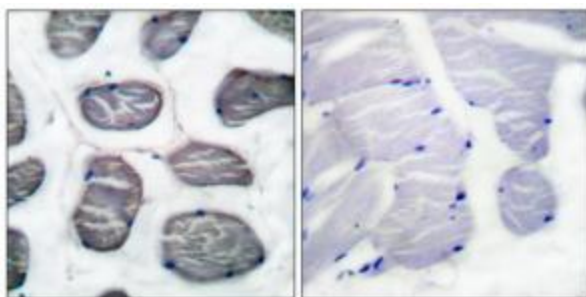
Product images:



Western blot analysis of extracts from LOVO cells, using Actin-a-1 antibody. The lane on the right is treated with the synthesized peptide.



Western blot analysis of extracts from A549 cells (Lane 2), using Actin-a-1 Antibody. The lane on the left is treated with synthesized peptide.



Immunohistochemical analysis of paraffin-embedded human muscle tissue using Actin-a-1 antibody. The picture on the right is treated with the synthesized peptide.