

Product datasheet for **TA313416**

Acrosin (ACR) Rabbit Polyclonal Antibody

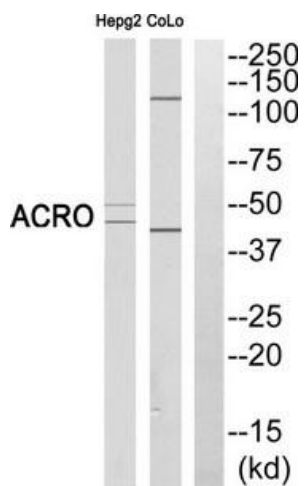
Product data:

Product Type:	Primary Antibodies
Applications:	WB
Recommended Dilution:	WB: 1:500~1:3000, ELISA: 1:1000
Reactivity:	Human
Host:	Rabbit
Isotype:	IgG
Clonality:	Polyclonal
Immunogen:	The antiserum was produced against synthesized peptide derived from human ACRO
Formulation:	Phosphate buffered saline (without Mg ²⁺ and Ca ²⁺), pH 7.4, 150mM NaCl, 0.02% sodium azide and 50% glycerol.
Concentration:	lot specific
Purification:	The antibody was affinity-purified from rabbit antiserum by affinity-chromatography using epitope-specific immunogen.
Conjugation:	Unconjugated
Storage:	Store at -20°C as received.
Stability:	Stable for 12 months from date of receipt.
Gene Name:	acrosin
Database Link:	NP_001088 Entrez Gene 49 Human P10323
Synonyms:	acrosin; preproacrosin; proacrosin
Note:	ACRO (heavy chain, Cleaved-Ile43) antibody detects endogenous levels of fragment of activated ACRO resulting from cleavage adjacent to Ile43.
Protein Families:	Druggable Genome, Protease



[View online »](#)

Product images:



Western blot analysis of extracts from HEPG2 cells and COLO cells, using ACRO (heavy chain, Cleaved-Ile43) antibody. The lane on the right is treated with the synthesized peptide.