

Product datasheet for **TA313414**

ACAT1 (ACACA) Rabbit Polyclonal Antibody

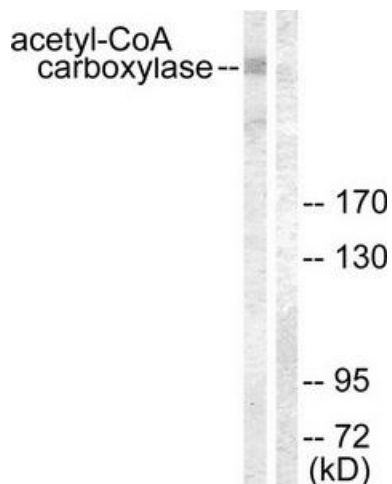
Product data:

Product Type:	Primary Antibodies
Applications:	IHC, WB
Recommended Dilution:	WB: 1:500~1:3000, IHC: 1:50~1:100, ELISA: 1:5000
Reactivity:	Human, Mouse, Rat
Host:	Rabbit
Isotype:	IgG
Clonality:	Polyclonal
Immunogen:	The antiserum was produced against synthesized non-phosphopeptide derived from human Acetyl-CoA Carboxylase around the phosphorylation site of serine 80 (S-M-SP-G-L).
Formulation:	Phosphate buffered saline (without Mg ²⁺ and Ca ²⁺), pH 7.4, 150mM NaCl, 0.02% sodium azide and 50% glycerol.
Concentration:	lot specific
Purification:	The antibody was affinity-purified from rabbit antiserum by affinity-chromatography using epitope-specific immunogen.
Conjugation:	Unconjugated
Storage:	Store at -20°C as received.
Stability:	Stable for 12 months from date of receipt.
Gene Name:	acetyl-CoA carboxylase alpha
Database Link:	NP_942132 Entrez Gene 60581 Rat Entrez Gene 107476 Mouse Entrez Gene 31 Human Q13085
Synonyms:	ACAC; ACC; ACC1; ACCA
Note:	Acetyl-CoA Carboxylase (Ab-80) antibody detects endogenous levels of total Acetyl-CoA Carboxylase protein
Protein Families:	Druggable Genome
Protein Pathways:	Fatty acid biosynthesis, Insulin signaling pathway, Metabolic pathways, Propanoate metabolism, Pyruvate metabolism

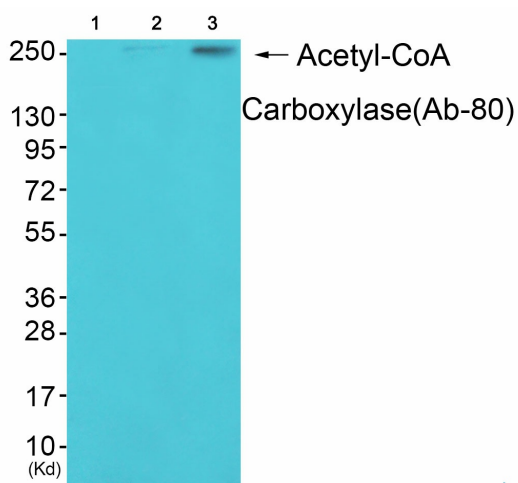


[View online »](#)

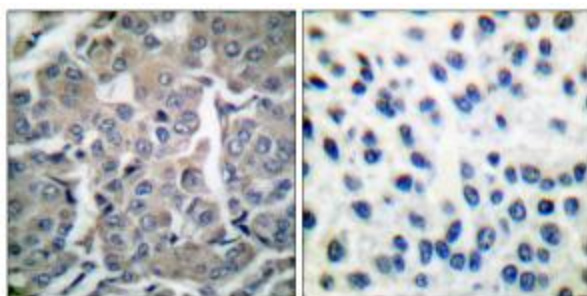
Product images:



Western blot analysis of extracts from NIH/3T3 cells treated with PMA (125ng/ml, 15min), using Acetyl-CoA Carboxylase (Ab-80) antibody. The lane on the right is treated with the synthesized peptide.



Western blot analysis of extracts from HuvEc cells (Lane 2) and 3T3 cells (Lane 3), using Acetyl-CoA Carboxylase (Ab-80) Antibody. The lane on the left is treated with synthesized peptide.



Immunohistochemical analysis of paraffin-embedded human colon carcinoma tissue using Acetyl-CoA Carboxylase (Ab-80) antibody. The picture on the right is treated with the synthesized peptide.