

Product datasheet for **TA313412**

ACAT1 (ACACA) Rabbit Polyclonal Antibody

Product data:

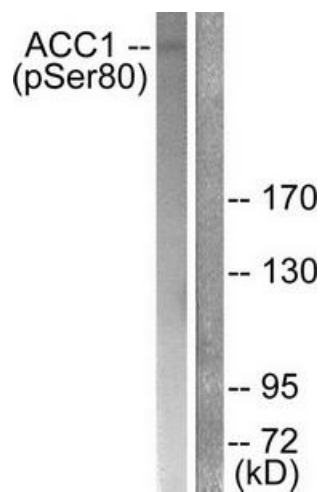
Product Type:	Primary Antibodies
Applications:	IHC, WB
Recommended Dilution:	WB: 1:500~1:3000, IHC: 1:50~100, ELISA: 1:1000
Reactivity:	Human, Mouse, Rat
Modifications:	Phospho-specific
Host:	Rabbit
Isotype:	IgG
Clonality:	Polyclonal
Immunogen:	The antiserum was produced against synthesized phosphopeptide derived from human ACC1 around the phosphorylation site of serine 79 (S-M-SP-G-L).
Formulation:	Phosphate buffered saline (without Mg ²⁺ and Ca ²⁺), pH 7.4, 150mM NaCl, 0.02% sodium azide and 50% glycerol.
Concentration:	lot specific
Purification:	The antibody was affinity-purified from rabbit antiserum by affinity-chromatography using epitope-specific immunogen.
Conjugation:	Unconjugated
Storage:	Store at -20°C as received.
Stability:	Stable for 12 months from date of receipt.
Gene Name:	acetyl-CoA carboxylase alpha
Database Link:	NP_942132 Entrez Gene 60581 Rat Entrez Gene 107476 Mouse Entrez Gene 31 Human Q13085
Synonyms:	ACAC; ACC; ACC1; ACCA
Note:	ACC1 (Phospho-Ser80) antibody detects endogenous levels of ACC1 only when phosphorylated at serine 79
Protein Families:	Druggable Genome



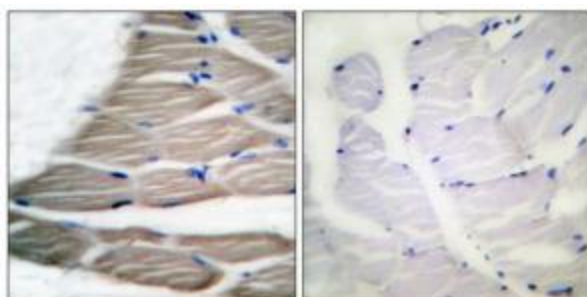
[View online »](#)

Protein Pathways: Fatty acid biosynthesis, Insulin signaling pathway, Metabolic pathways, Propanoate metabolism, Pyruvate metabolism

Product images:



Western blot analysis of extracts from K562 cells treated with Insulin (0.01U/ml, 15mins), using ACC1 (Phospho-Ser80) antibody (#TA313412). The lane on the right is treated with the synthesized peptide.



Immunohistochemical analysis of paraffin-embedded human skeletal muscle tissue, using ACC1 (Phospho-Ser80) antibody (#TA313412). The picture on the right is treated with the synthesized peptide.