

Product datasheet for **TA313408**

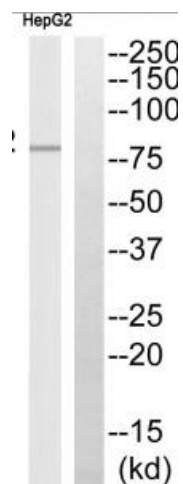
ABCB7 Rabbit Polyclonal Antibody

Product data:

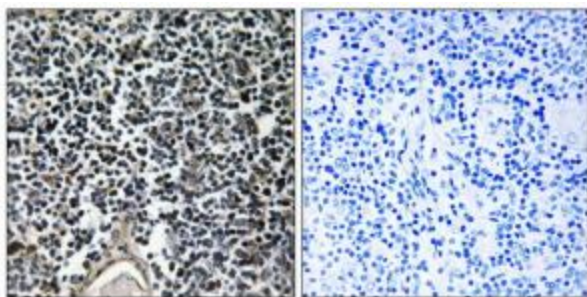
| | |
|-----------------------|--|
| Product Type: | Primary Antibodies |
| Applications: | IHC, WB |
| Recommended Dilution: | IHC: 1:50~1:100, ELISA: 1:5000 |
| Reactivity: | Human |
| Host: | Rabbit |
| Isotype: | IgG |
| Clonality: | Polyclonal |
| Immunogen: | The antiserum was produced against synthesized peptide derived from internal of human ABCB7. |
| Formulation: | Phosphate buffered saline (without Mg ²⁺ and Ca ²⁺), pH 7.4, 150mM NaCl, 0.02% sodium azide and 50% glycerol. |
| Concentration: | lot specific |
| Purification: | The antibody was affinity-purified from rabbit antiserum by affinity-chromatography using epitope-specific immunogen. |
| Conjugation: | Unconjugated |
| Storage: | Store at -20°C as received. |
| Stability: | Stable for 12 months from date of receipt. |
| Gene Name: | ATP binding cassette subfamily B member 7 |
| Database Link: | NP_004290 Entrez Gene 22 Human O75027 |
| Synonyms: | ABC7; ASAT; Atm1p; EST140535 |
| Note: | ABCB7 antibody detects endogenous levels of total ABCB7 protein. |
| Protein Families: | Druggable Genome, Transmembrane |
| Protein Pathways: | ABC transporters |



[View online »](#)

Product images:

Western blot analysis of extracts from HepG2 cells, using ABCB7 antibody. The lane on the right is treated with the synthesized peptide.



Immunohistochemistry analysis of paraffin-embedded human thymus gland tissue using ABCB7 antibody. The picture on the right is treated with the synthesized peptide.