

Product datasheet for **TA313404**

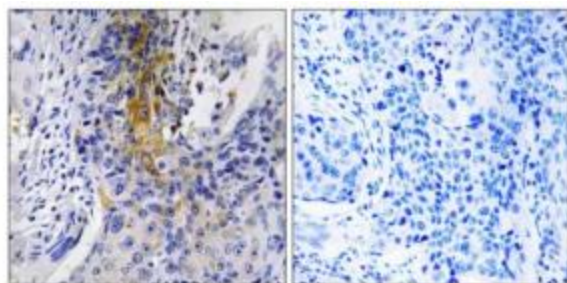
SETMAR Rabbit Polyclonal Antibody

Product data:

Product Type:	Primary Antibodies
Applications:	IHC
Recommended Dilution:	IHC: 1:50~1:100, ELISA: 1:40000
Reactivity:	Human
Host:	Rabbit
Isotype:	IgG
Clonality:	Polyclonal
Immunogen:	The antiserum was produced against synthesized peptide derived from internal of human SETMAR.
Formulation:	Phosphate buffered saline (without Mg ²⁺ and Ca ²⁺), pH 7.4, 150mM NaCl, 0.02% sodium azide and 50% glycerol.
Concentration:	lot specific
Purification:	The antibody was affinity-purified from rabbit antiserum by affinity-chromatography using epitope-specific immunogen.
Conjugation:	Unconjugated
Storage:	Store at -20°C as received.
Stability:	Stable for 12 months from date of receipt.
Gene Name:	SET domain and mariner transposase fusion gene
Database Link:	NP_006506 Entrez Gene 6419 Human Q53H47
Synonyms:	Mar1; METNASE
Note:	SETMAR antibody detects endogenous levels of total SETMAR protein.
Protein Families:	Druggable Genome, Transcription Factors
Protein Pathways:	Lysine degradation



[View online »](#)

Product images:

Peptide

-

+

Immunohistochemistry analysis of paraffin-embedded human lung carcinoma tissue using SETMAR antibody. The picture on the right is treated with the synthesized peptide.