

Product datasheet for **TA313400**

p53 DINP1 (TP53INP1) Rabbit Polyclonal Antibody

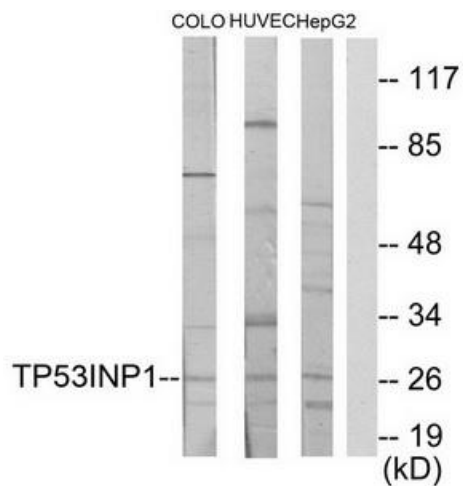
Product data:

Product Type:	Primary Antibodies
Applications:	WB
Recommended Dilution:	WB: 1:500~1:3000, ELISA: 1:40000
Reactivity:	Human
Host:	Rabbit
Isotype:	IgG
Clonality:	Polyclonal
Immunogen:	The antiserum was produced against synthesized peptide derived from C-terminal of human TP53INP1.
Formulation:	Phosphate buffered saline (without Mg ²⁺ and Ca ²⁺), pH 7.4, 150mM NaCl, 0.02% sodium azide and 50% glycerol.
Concentration:	lot specific
Purification:	The antibody was affinity-purified from rabbit antiserum by affinity-chromatography using epitope-specific immunogen.
Conjugation:	Unconjugated
Storage:	Store at -20°C as received.
Stability:	Stable for 12 months from date of receipt.
Gene Name:	tumor protein p53 inducible nuclear protein 1
Database Link:	NP_001129205 Entrez Gene 94241 Human Q96A56
Synonyms:	p53DINP1; SIP; Teap; TP53DINP1; TP53INP1A; TP53INP1B
Note:	TP53INP1 antibody detects endogenous levels of total TP53INP1 protein.
Protein Families:	Druggable Genome



[View online »](#)

Product images:



Western blot analysis of extracts from COLO205 cells, HUVEC cells and HepG2 cells, using TP53INP1 antibody. The lane on the right is treated with the synthesized peptide.