

Product datasheet for **TA313396**

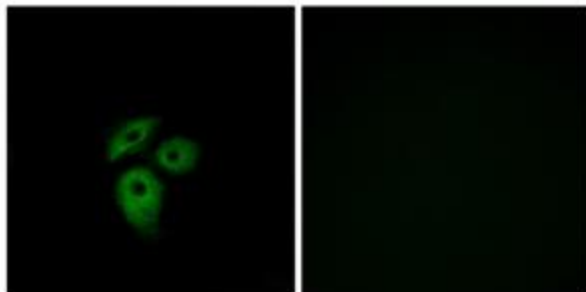
DARC (ACKR1) Rabbit Polyclonal Antibody

Product data:

Product Type:	Primary Antibodies
Applications:	IF
Recommended Dilution:	IF: 1:100~1:500, ELISA: 1:40000
Reactivity:	Human
Host:	Rabbit
Isotype:	IgG
Clonality:	Polyclonal
Immunogen:	The antiserum was produced against synthesized peptide derived from internal of human CD234.
Formulation:	Phosphate buffered saline (without Mg ²⁺ and Ca ²⁺), pH 7.4, 150mM NaCl, 0.02% sodium azide and 50% glycerol.
Concentration:	lot specific
Purification:	The antibody was affinity-purified from rabbit antiserum by affinity-chromatography using epitope-specific immunogen.
Conjugation:	Unconjugated
Storage:	Store at -20°C as received.
Stability:	Stable for 12 months from date of receipt.
Gene Name:	atypical chemokine receptor 1 (Duffy blood group)
Database Link:	NP_002027 Entrez Gene 2532 Human Q16570
Synonyms:	CCBP1; CD234; DARC; Dfy; FY; GPD; GpFy; WBCQ1
Note:	CD234 antibody detects endogenous levels of total CD234 protein.
Protein Families:	Druggable Genome, GPCR, Transmembrane



[View online »](#)

Product images:

Immunofluorescence analysis of A549 cells, using CD234 antibody. The picture on the right is treated with the synthesized peptide.