

## Product datasheet for **TA313394**

### CDC27 Rabbit Polyclonal Antibody

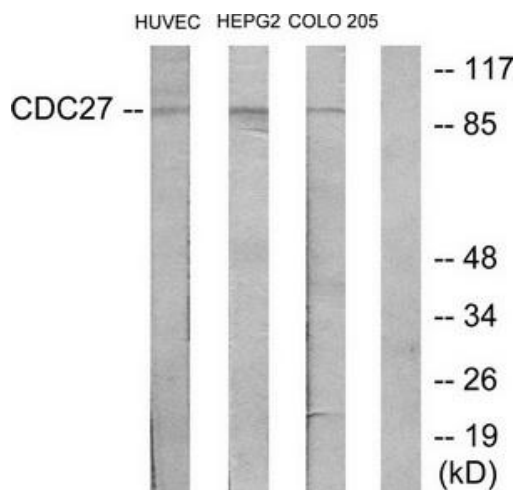
#### Product data:

Product Type:	Primary Antibodies
Applications:	WB
Recommended Dilution:	WB: 1:500~1:3000, ELISA: 1:5000
Reactivity:	Human, Mouse, Rat
Host:	Rabbit
Isotype:	IgG
Clonality:	Polyclonal
Immunogen:	The antiserum was produced against synthesized peptide derived from internal of human H-NUC.
Formulation:	Phosphate buffered saline (without Mg <sup>2+</sup> and Ca <sup>2+</sup> ), pH 7.4, 150mM NaCl, 0.02% sodium azide and 50% glycerol.
Concentration:	lot specific
Purification:	The antibody was affinity-purified from rabbit antiserum by affinity-chromatography using epitope-specific immunogen.
Conjugation:	Unconjugated
Storage:	Store at -20°C as received.
Stability:	Stable for 12 months from date of receipt.
Gene Name:	cell division cycle 27
Database Link:	<a href="#">NP_001107563</a> <a href="#">Entrez Gene 217232 MouseEntrez Gene 360643 RatEntrez Gene 996 Human P30260</a>
Synonyms:	ANAPC3; APC3; CDC27Hs; D0S1430E; D17S978E; H-NUC; HNUC; NUC2
Note:	H-NUC antibody detects endogenous levels of total H-NUC protein.
Protein Families:	Druggable Genome
Protein Pathways:	Cell cycle, Oocyte meiosis, Progesterone-mediated oocyte maturation, Ubiquitin mediated proteolysis



[View online »](#)

## Product images:



Western blot analysis of extracts from HUVEC cells, HepG2 cells and COLO205 cells, using H-NUC antibody. The lane on the right is treated with the synthesized peptide.