

Product datasheet for **TA313393**

PDE4C Rabbit Polyclonal Antibody

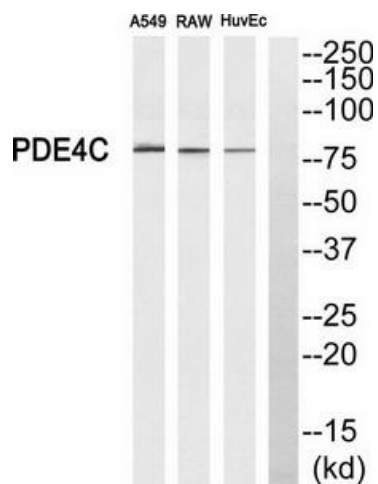
Product data:

Product Type:	Primary Antibodies
Applications:	WB
Recommended Dilution:	WB: 1:500~1:3000, ELISA: 1:5000
Reactivity:	Human, Mouse, Rat
Host:	Rabbit
Isotype:	IgG
Clonality:	Polyclonal
Immunogen:	The antiserum was produced against synthesized peptide derived from internal of human PDE4C.
Formulation:	Phosphate buffered saline (without Mg ²⁺ and Ca ²⁺), pH 7.4, 150mM NaCl, 0.02% sodium azide and 50% glycerol.
Concentration:	lot specific
Purification:	The antibody was affinity-purified from rabbit antiserum by affinity-chromatography using epitope-specific immunogen.
Conjugation:	Unconjugated
Storage:	Store at -20°C as received.
Stability:	Stable for 12 months from date of receipt.
Gene Name:	phosphodiesterase 4C
Database Link:	NP_001092289 Entrez Gene 110385 MouseEntrez Gene 290646 RatEntrez Gene 5143 Human Q08493
Synonyms:	DPDE1; PDE21
Note:	PDE4C antibody detects endogenous levels of total PDE4C protein.
Protein Families:	Druggable Genome
Protein Pathways:	Progesterone-mediated oocyte maturation, Purine metabolism



[View online »](#)

Product images:



Western blot analysis of extracts from A549 cells, RAW264.7 cells and HuvEc cells, using PDE4C antibody. The lane on the right is treated with the synthesized peptide.