

Product datasheet for **TA313388**

Presenilin 1 (PSEN1) Rabbit Polyclonal Antibody

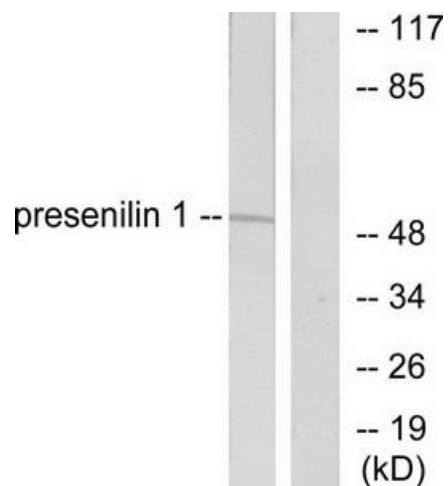
Product data:

Product Type:	Primary Antibodies
Applications:	IHC, WB
Recommended Dilution:	WB: 1:500~1:3000, IHC: 1:50~1:100, ELISA: 1:40000
Reactivity:	Human
Host:	Rabbit
Isotype:	IgG
Clonality:	Polyclonal
Immunogen:	The antiserum was produced against synthesized peptide derived from human presenilin 1.
Formulation:	Phosphate buffered saline (without Mg ²⁺ and Ca ²⁺), pH 7.4, 150mM NaCl, 0.02% sodium azide and 50% glycerol.
Concentration:	lot specific
Purification:	The antibody was affinity-purified from rabbit antiserum by affinity-chromatography using epitope-specific immunogen.
Conjugation:	Unconjugated
Storage:	Store at -20°C as received.
Stability:	Stable for 12 months from date of receipt.
Gene Name:	presenilin 1
Database Link:	NP_000012 Entrez Gene 5663 Human P49768
Synonyms:	AD3; FAD; PS-1; PS1; S182
Note:	Presenilin 1 antibody detects endogenous levels of total presenilin 1 protein.
Protein Families:	Druggable Genome, Protease, Transmembrane
Protein Pathways:	Alzheimer's disease, Neurotrophin signaling pathway, Notch signaling pathway, Wnt signaling pathway

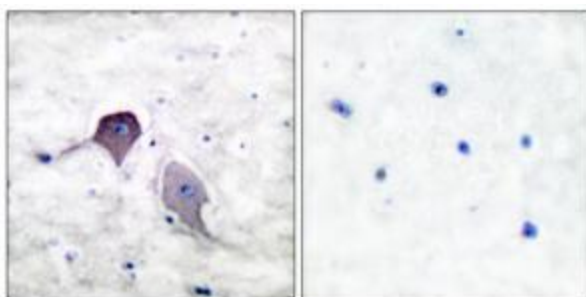


[View online »](#)

Product images:



Western blot analysis of extracts from mouse heart cells, using presenilin 1 antibody (#TA313388). The lane on the right is treated with the synthesized peptide.



Immunohistochemical analysis of paraffin-embedded human brain tissue using presenilin 1 antibody (#TA313388). The picture on the right is treated with the synthesized peptide.