

## Product datasheet for **TA313385**

### beta 2 Adrenergic Receptor (ADRB2) Rabbit Polyclonal Antibody

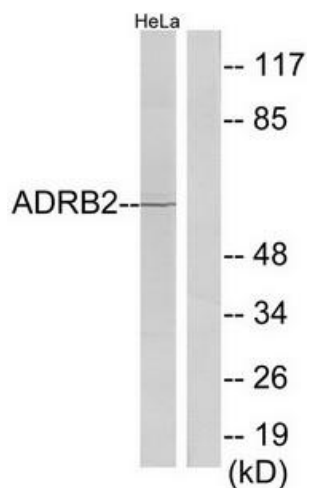
#### Product data:

|                       |  |
|-----------------------|--|
| Product Type:         | Primary Antibodies   |
| Applications:         | IF, WB   |
| Recommended Dilution: | WB: 1:500~1:3000, IF: 1:100~1:500, ELISA: 1:20000  |
| Reactivity:           | Human, Mouse, Rat  |
| Host:                 | Rabbit   |
| Isotype:              | IgG  |
| Clonality:            | Polyclonal   |
| Immunogen:            | The antiserum was produced against synthesized peptide derived from C-terminal of human ADRB2.   |
| Formulation:          | Phosphate buffered saline (without Mg <sup>2+</sup> and Ca <sup>2+</sup> ), pH 7.4, 150mM NaCl, 0.02% sodium azide and 50% glycerol.                                       |
| Concentration:        | lot specific   |
| Purification:         | The antibody was affinity-purified from rabbit antiserum by affinity-chromatography using epitope-specific immunogen.  |
| Conjugation:          | Unconjugated   |
| Storage:              | Store at -20°C as received.  |
| Stability:            | Stable for 12 months from date of receipt.   |
| Gene Name:            | adrenoceptor beta 2  |
| Database Link:        | <a href="#">NP_000015</a><br><a href="#">Entrez Gene 11555 Mouse</a> <a href="#">Entrez Gene 24176 Rat</a> <a href="#">Entrez Gene 154 Human</a><br><a href="#">P07550</a> |
| Synonyms:             | ADRB2R; ADRBR; B2AR; BAR; BETA2AR  |
| Note:                 | ADRB2 antibody detects endogenous levels of total ADRB2 protein.   |
| Protein Families:     | Druggable Genome, GPCR, Transmembrane  |
| Protein Pathways:     | Calcium signaling pathway, Endocytosis, Neuroactive ligand-receptor interaction  |

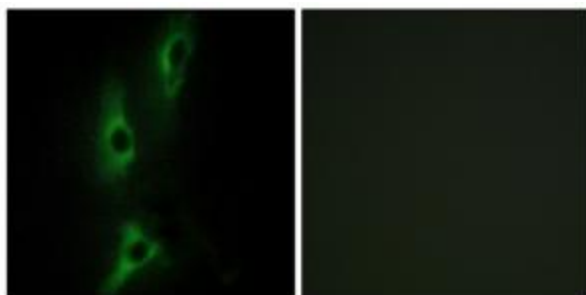


[View online »](#)

## Product images:



Western blot analysis of extracts from HeLa cells, using ADRB2 antibody. The lane on the right is treated with the synthesized peptide.



Immunofluorescence analysis of NIH/3T3 cells, using ADRB2 antibody. The picture on the right is treated with the synthesized peptide.