

Product datasheet for **TA313379**

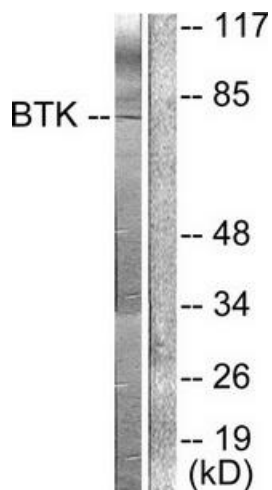
BTK Rabbit Polyclonal Antibody

Product data:

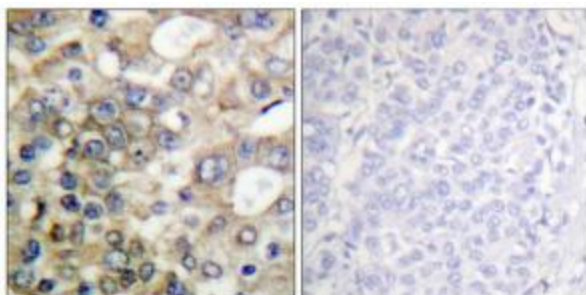
Product Type:	Primary Antibodies
Applications:	IHC, WB
Recommended Dilution:	WB: 1:500~1:3000, IHC: 1:50~1:100, ELISA: 1:20000
Reactivity:	Human, Mouse
Host:	Rabbit
Isotype:	IgG
Clonality:	Polyclonal
Immunogen:	The antiserum was produced against synthesized non-phosphopeptide derived from human BTK around the phosphorylation site of tyrosine 222 (A-L-YP-D-Y).
Formulation:	Phosphate buffered saline (without Mg ²⁺ and Ca ²⁺), pH 7.4, 150mM NaCl, 0.02% sodium azide and 50% glycerol.
Concentration:	lot specific
Purification:	The antibody was affinity-purified from rabbit antiserum by affinity-chromatography using epitope-specific immunogen.
Conjugation:	Unconjugated
Storage:	Store at -20°C as received.
Stability:	Stable for 12 months from date of receipt.
Gene Name:	Bruton tyrosine kinase
Database Link:	NP_000052 Entrez Gene 12229 Mouse Entrez Gene 695 Human Q06187
Synonyms:	AGMX1; AT; ATK; BPK; IMD1; PSCTK1; XLA
Note:	BTK (Ab-222) antibody detects endogenous levels of total BTK protein.
Protein Families:	Druggable Genome, Protein Kinase
Protein Pathways:	B cell receptor signaling pathway, Fc epsilon RI signaling pathway, Primary immunodeficiency



[View online »](#)

Product images:

Western blot analysis of extracts from HeLa cells, using BTK (Ab-222) antibody (#TA313379, Line 1 and 2). The lane on the right is treated with the synthesized peptide.



Immunohistochemical analysis of paraffin-embedded human breast carcinoma tissue using BTK (Ab-222) antibody (#TA313379). The picture on the right is treated with the synthesized peptide.