

Product datasheet for **TA313376**

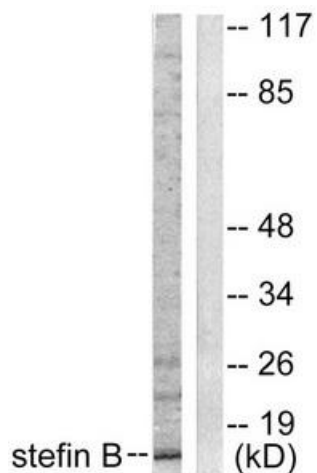
Stefin B (CSTB) Rabbit Polyclonal Antibody

Product data:

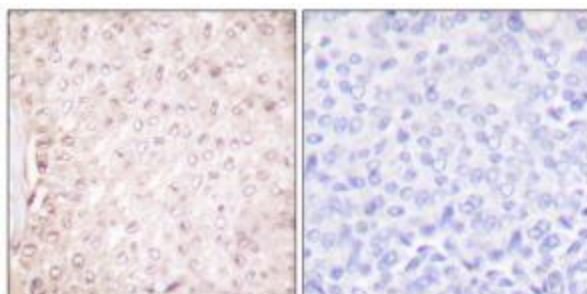
Product Type:	Primary Antibodies
Applications:	IF, IHC, WB
Recommended Dilution:	WB: 1:500~1:3000, IHC: 1:50~1:100, IF: 1:100~1:500, ELISA: 1:20000
Reactivity:	Human, Mouse, Rat
Host:	Rabbit
Isotype:	IgG
Clonality:	Polyclonal
Immunogen:	The antiserum was produced against synthesized peptide derived from human stefin B.
Formulation:	Phosphate buffered saline (without Mg ²⁺ and Ca ²⁺), pH 7.4, 150mM NaCl, 0.02% sodium azide and 50% glycerol.
Concentration:	lot specific
Purification:	The antibody was affinity-purified from rabbit antiserum by affinity-chromatography using epitope-specific immunogen.
Conjugation:	Unconjugated
Storage:	Store at -20°C as received.
Stability:	Stable for 12 months from date of receipt.
Gene Name:	cystatin B
Database Link:	NP_000091 Entrez Gene 13014 Mouse Entrez Gene 25308 Rat Entrez Gene 1476 Human P04080
Synonyms:	CPI-B; CST6; EPM1; EPM1A; PME; STFB; ULD
Note:	Stefin B antibody detects endogenous levels of total stefin B protein.



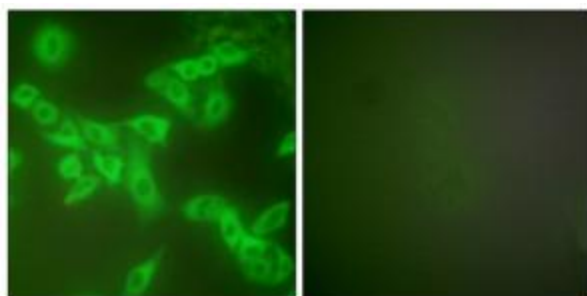
[View online »](#)

Product images:


Western blot analysis of extracts from A549 cells, using Stefin B antibody (#TA313376). The lane on the right is treated with the synthesized peptide.



Immunohistochemical analysis of paraffin-embedded human breast carcinoma tissue using Stefin B antibody (#TA313376). The picture on the right is treated with the synthesized peptide.



Immunofluorescence analysis of A549 cells, using Stefin B antibody (#TA313376). The picture on the right is treated with the synthesized peptide.