

## Product datasheet for **TA313375**

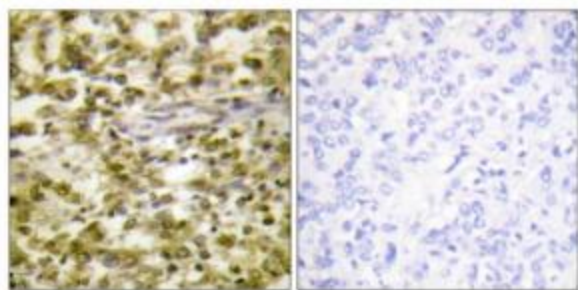
### CSB (ERCC6) Rabbit Polyclonal Antibody

#### Product data:

Product Type:	Primary Antibodies
Applications:	IHC
Recommended Dilution:	IHC: 1:50~1:100, ELISA: 1:40000
Reactivity:	Human
Host:	Rabbit
Isotype:	IgG
Clonality:	Polyclonal
Immunogen:	The antiserum was produced against synthesized peptide derived from internal of human ERCC6.
Formulation:	Phosphate buffered saline (without Mg <sup>2+</sup> and Ca <sup>2+</sup> ), pH 7.4, 150mM NaCl, 0.02% sodium azide and 50% glycerol.
Concentration:	lot specific
Purification:	The antibody was affinity-purified from rabbit antiserum by affinity-chromatography using epitope-specific immunogen.
Conjugation:	Unconjugated
Storage:	Store at -20°C as received.
Stability:	Stable for 12 months from date of receipt.
Gene Name:	ERCC excision repair 6, chromatin remodeling factor
Database Link:	<a href="#">NP_000115</a> <a href="#">Entrez Gene 2074 Human</a> <a href="#">Q03468</a>
Synonyms:	ARMD5; CKN2; COFS; COFS1; CSB; RAD26; UVSS1
Note:	ERCC6 antibody detects endogenous levels of total ERCC6 protein.
Protein Families:	Druggable Genome
Protein Pathways:	Nucleotide excision repair



[View online »](#)

**Product images:**

Peptide

-

+

Immunohistochemistry analysis of paraffin-embedded human breast carcinoma tissue, using ERCC6 antibody. The picture on the right is treated with the synthesized peptide.