

Product datasheet for **TA313374**

FGFR3 Rabbit Polyclonal Antibody

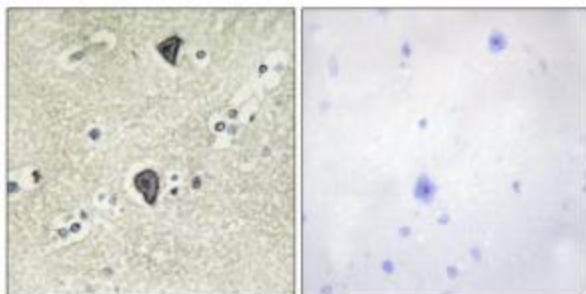
Product data:

Product Type:	Primary Antibodies
Applications:	IHC, WB
Recommended Dilution:	WB: 1:500~1:3000, IHC: 1:50~1:100, ELISA: 1:10000
Reactivity:	Human, Mouse, Rat
Host:	Rabbit
Isotype:	IgG
Clonality:	Polyclonal
Immunogen:	The antiserum was produced against synthesized peptide derived from human FGFR3.
Formulation:	Phosphate buffered saline (without Mg ²⁺ and Ca ²⁺), pH 7.4, 150mM NaCl, 0.02% sodium azide and 50% glycerol.
Concentration:	lot specific
Purification:	The antibody was affinity-purified from rabbit antiserum by affinity-chromatography using epitope-specific immunogen.
Conjugation:	Unconjugated
Storage:	Store at -20°C as received.
Stability:	Stable for 12 months from date of receipt.
Gene Name:	fibroblast growth factor receptor 3
Database Link:	NP_000133 Entrez Gene 14184 Mouse Entrez Gene 84489 Rat Entrez Gene 2261 Human P22607
Synonyms:	ACH; CD333; CEK2; HSGFR3EX; JTK4
Note:	FGFR3 antibody detects endogenous levels of total FGFR3 protein.
Protein Families:	Druggable Genome, Protein Kinase, Transmembrane
Protein Pathways:	Bladder cancer, Endocytosis, MAPK signaling pathway, Pathways in cancer, Regulation of actin cytoskeleton

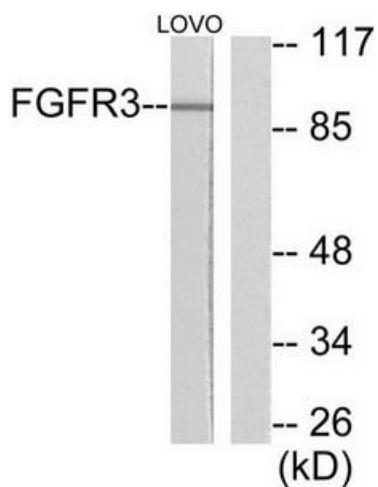


[View online »](#)

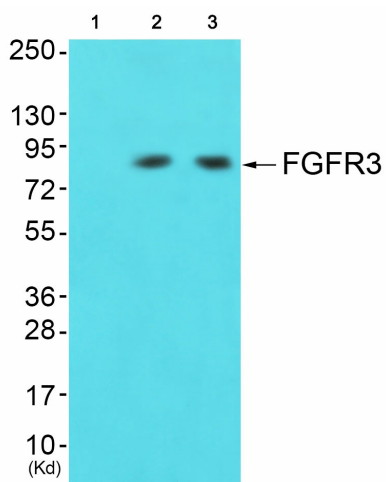
Product images:



Immunohistochemical analysis of paraffin-embedded human breast carcinoma tissue using FGFR3 antibody. The picture on the right is treated with the synthesized peptide.



Western blot analysis of extracts from LOVO cells, using FGFR3 antibody. The lane on the right is treated with the synthesized peptide.



Western blot analysis of extracts from 293 cells (Lane 2) and HepG2 cells (Lane 3), using FGFR3 Antibody. The lane on the left is treated with synthesized peptide.