

Product datasheet for **TA313373**

Glucocorticoid Receptor (NR3C1) Rabbit Polyclonal Antibody

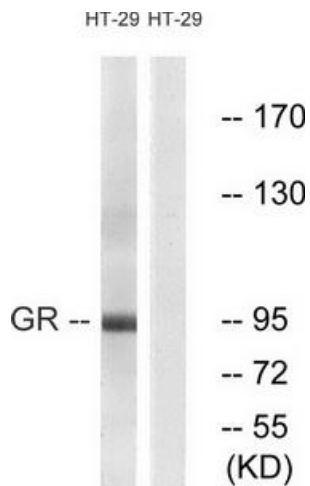
Product data:

Product Type:	Primary Antibodies
Applications:	IF, IHC, WB
Recommended Dilution:	WB: 1:500~1:3000, IHC: 1:50~1:100, IF: 1:100~1:500, ELISA: 1:40000
Reactivity:	Human, Mouse, Rat
Host:	Rabbit
Isotype:	IgG
Clonality:	Polyclonal
Immunogen:	The antiserum was produced against synthesized non-phosphopeptide derived from human GR around the phosphorylation site of serine 211 (N-E-S-P-W).
Formulation:	Phosphate buffered saline (without Mg ²⁺ and Ca ²⁺), pH 7.4, 150mM NaCl, 0.02% sodium azide and 50% glycerol.
Concentration:	lot specific
Purification:	The antibody was affinity-purified from rabbit antiserum by affinity-chromatography using epitope-specific immunogen.
Conjugation:	Unconjugated
Storage:	Store at -20°C as received.
Stability:	Stable for 12 months from date of receipt.
Gene Name:	nuclear receptor subfamily 3 group C member 1
Database Link:	NP_000167 Entrez Gene 14815 Mouse Entrez Gene 24413 Rat Entrez Gene 2908 Human P04150
Synonyms:	GCCR; GCR; GCRST; GR; GRL
Note:	GR (Ab-211) antibody detects endogenous levels of total GR protein.
Protein Families:	Druggable Genome, Nuclear Hormone Receptor, Transcription Factors
Protein Pathways:	Neuroactive ligand-receptor interaction

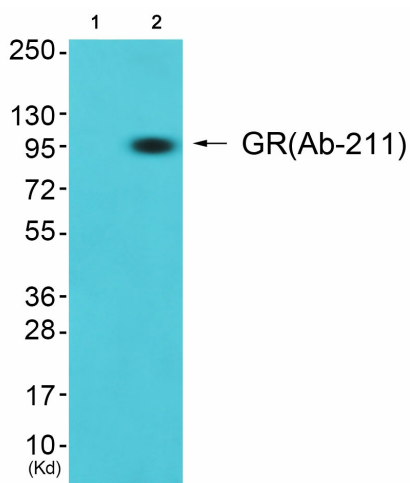


[View online »](#)

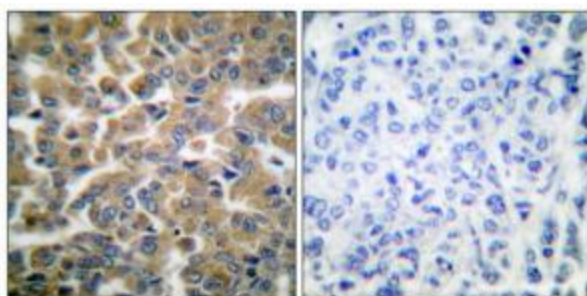
Product images:



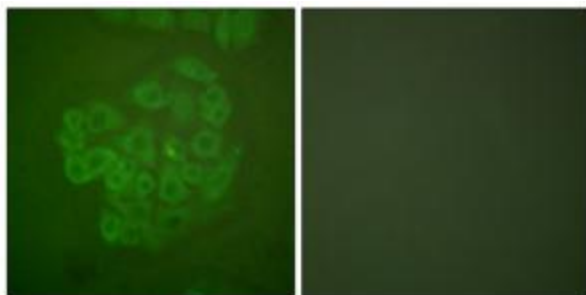
Western blot analysis of extracts from HeLa cells treated with PMA (125ng/ml, 30min), using GR (Ab-211) antibody (#TA313373, Line 1 and 2). The lane on the right is treated with the synthesized peptide.



Western blot analysis of extracts from K562 cells (Lane 2), using GR (Ab-211) Antibody. The lane on the left is treated with synthesized peptide.



Immunohistochemical analysis of paraffin-embedded human breast carcinoma tissue using GR (Ab-211) antibody (#TA313373). The picture on the right is treated with the synthesized peptide.



Immunofluorescence analysis of A549 cells, using GR (Ab-211) antibody (#TA313373). The picture on the right is treated with the synthesized peptide.