

Product datasheet for **TA313372**

Glucocorticoid Receptor (NR3C1) Rabbit Polyclonal Antibody

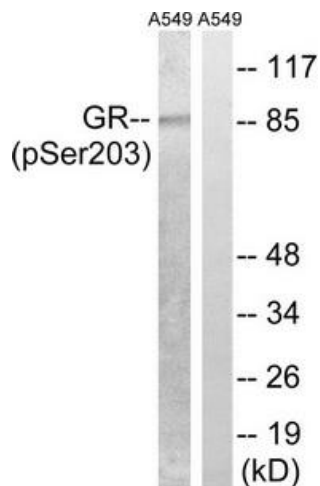
Product data:

Product Type:	Primary Antibodies
Applications:	WB
Recommended Dilution:	WB: 1:500~1:3000, ELISA: 1:10000
Reactivity:	Human, Mouse
Modifications:	Phospho-specific
Host:	Rabbit
Isotype:	IgG
Clonality:	Polyclonal
Immunogen:	The antiserum was produced against synthesized phosphopeptide derived from human GR around the phosphorylation site of serine 203 (S-G-SP-P-G).
Formulation:	Phosphate buffered saline (without Mg ²⁺ and Ca ²⁺), pH 7.4, 150mM NaCl, 0.02% sodium azide and 50% glycerol.
Concentration:	lot specific
Purification:	The antibody was affinity-purified from rabbit antiserum by affinity-chromatography using epitope-specific immunogen.
Conjugation:	Unconjugated
Storage:	Store at -20°C as received.
Stability:	Stable for 12 months from date of receipt.
Gene Name:	nuclear receptor subfamily 3 group C member 1
Database Link:	NP_000167 Entrez Gene 14815 Mouse Entrez Gene 2908 Human P04150
Synonyms:	GCCR; GCR; GCRST; GR; GRL
Note:	GR (Phospho-Ser203) antibody detects endogenous levels of GR only when phosphorylated at serine 203.
Protein Families:	Druggable Genome, Nuclear Hormone Receptor, Transcription Factors
Protein Pathways:	Neuroactive ligand-receptor interaction

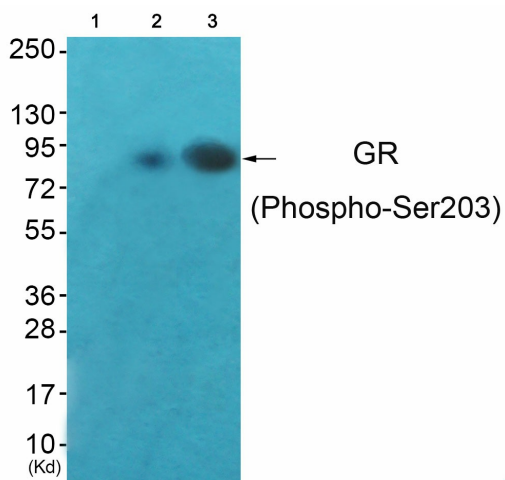


[View online »](#)

Product images:



Western blot analysis of extracts from A549 cells, treated with dexamethason (10 nM, 1 hour), using GR (Phospho-Ser203) antibody. The lane on the right is treated with the synthesized peptide.



Western blot analysis of extracts from HeLa cells (Lane 2) and Hepg2 cells (Lane 3), using GR (Phospho-Ser203) Antibody. The lane on the left is treated with synthesized peptide.