

Product datasheet for **TA313370**

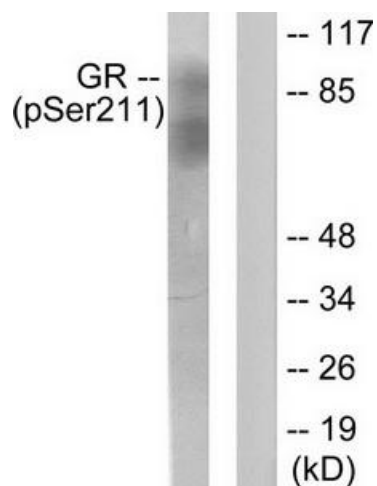
Glucocorticoid Receptor (NR3C1) Rabbit Polyclonal Antibody

Product data:

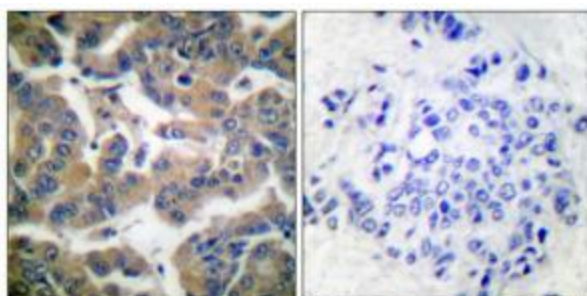
Product Type:	Primary Antibodies
Applications:	IHC, WB
Recommended Dilution:	WB: 1: 500~1:1000, IHC: 1:50~1:100, ELISA: 1:5000
Reactivity:	Human, Mouse, Rat
Modifications:	Phospho-specific
Host:	Rabbit
Isotype:	IgG
Clonality:	Polyclonal
Immunogen:	The antiserum was produced against synthesized phosphopeptide derived from human GR around the phosphorylation site of serine 211 (N-E-SP-P-W).
Formulation:	Phosphate buffered saline (without Mg ²⁺ and Ca ²⁺), pH 7.4, 150mM NaCl, 0.02% sodium azide and 50% glycerol.
Concentration:	lot specific
Purification:	The antibody was affinity-purified from rabbit antiserum by affinity-chromatography using epitope-specific immunogen.
Conjugation:	Unconjugated
Storage:	Store at -20°C as received.
Stability:	Stable for 12 months from date of receipt.
Gene Name:	nuclear receptor subfamily 3 group C member 1
Database Link:	NP_000167 Entrez Gene 14815 Mouse Entrez Gene 24413 Rat Entrez Gene 2908 Human P04150
Synonyms:	GCCR; GCR; GCRST; GR; GRL
Note:	GR (phospho-Ser211) antibody detects endogenous levels of GR only when phosphorylated at serine 211.
Protein Families:	Druggable Genome, Nuclear Hormone Receptor, Transcription Factors
Protein Pathways:	Neuroactive ligand-receptor interaction


[View online »](#)

Product images:



Western blot analysis of extracts from HeLa cells treated with Heat shock, using GR (phospho-Ser211) antibody. The lane on the right is treated with the synthesized peptide.



Immunohistochemical analysis of paraffin-embedded human breast carcinoma tissue using GR (phospho-Ser211) antibody. The picture on the right is treated with the synthesized peptide.