

Product datasheet for **TA313369**

Glucocorticoid Receptor (NR3C1) Rabbit Polyclonal Antibody

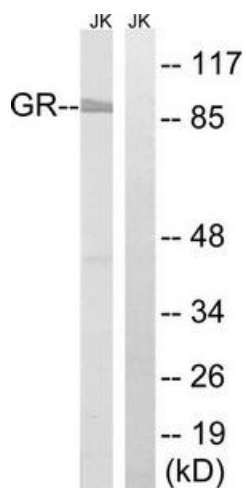
Product data:

| | |
|-----------------------|---|
| Product Type: | Primary Antibodies |
| Applications: | WB |
| Recommended Dilution: | WB: 1:500~1:3000, IHC: 1:50~1:100, ELISA: 1:5000 |
| Reactivity: | Human, Mouse |
| Host: | Rabbit |
| Isotype: | IgG |
| Clonality: | Polyclonal |
| Immunogen: | The antiserum was produced against synthesized non-phosphopeptide derived from human GR around the phosphorylation site of serine 203 (S-G-SP-P-G). |
| Formulation: | Phosphate buffered saline (without Mg ²⁺ and Ca ²⁺), pH 7.4, 150mM NaCl, 0.02% sodium azide and 50% glycerol. |
| Concentration: | lot specific |
| Purification: | The antibody was affinity-purified from rabbit antiserum by affinity-chromatography using epitope-specific immunogen. |
| Conjugation: | Unconjugated |
| Storage: | Store at -20°C as received. |
| Stability: | Stable for 12 months from date of receipt. |
| Gene Name: | nuclear receptor subfamily 3 group C member 1 |
| Database Link: | NP_000167 Entrez Gene 14815 Mouse Entrez Gene 2908 Human P04150 |
| Synonyms: | GCCR; GCR; GCRST; GR; GRL |
| Note: | GR (Ab-203) antibody detects endogenous levels of total GR protein. |
| Protein Families: | Druggable Genome, Nuclear Hormone Receptor, Transcription Factors |
| Protein Pathways: | Neuroactive ligand-receptor interaction |



[View online »](#)

Product images:



Western blot analysis of extracts from Jurkat cells, treated with PMA (125ng/ml, 30mins), using GR (Ab-203) antibody. The lane on the right is treated with the synthesized peptide.