

## Product datasheet for **TA313368**

### Glucocorticoid Receptor (NR3C1) Rabbit Polyclonal Antibody

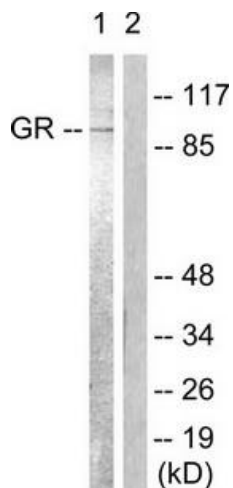
#### Product data:

Product Type:	Primary Antibodies
Applications:	IHC, WB
Recommended Dilution:	WB: 1:500~1:3000, IHC: 1:50~1:100, ELISA: 1:10000
Reactivity:	Human, Mouse, Rat
Host:	Rabbit
Isotype:	IgG
Clonality:	Polyclonal
Immunogen:	The antiserum was produced against synthesized non-phosphopeptide derived from human GR around the phosphorylation site of serine 226/234/246 (L-L-S-P-L).
Formulation:	Phosphate buffered saline (without Mg <sup>2+</sup> and Ca <sup>2+</sup> ), pH 7.4, 150mM NaCl, 0.02% sodium azide and 50% glycerol.
Concentration:	lot specific
Purification:	The antibody was affinity-purified from rabbit antiserum by affinity-chromatography using epitope-specific immunogen.
Conjugation:	Unconjugated
Storage:	Store at -20°C as received.
Stability:	Stable for 12 months from date of receipt.
Gene Name:	nuclear receptor subfamily 3 group C member 1
Database Link:	<a href="#">NP_000167</a> <a href="#">Entrez Gene 14815 MouseEntrez Gene 24413 RatEntrez Gene 2908 Human P04150</a>
Synonyms:	GCCR; GCR; GCRST; GR; GRL
Note:	GR (Ab-226) antibody detects endogenous levels of total GR protein.
Protein Families:	Druggable Genome, Nuclear Hormone Receptor, Transcription Factors
Protein Pathways:	Neuroactive ligand-receptor interaction

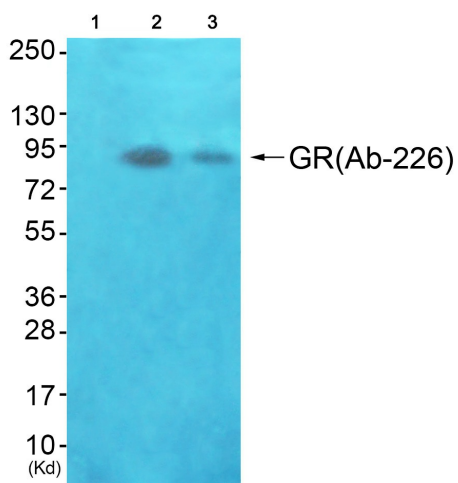


[View online »](#)

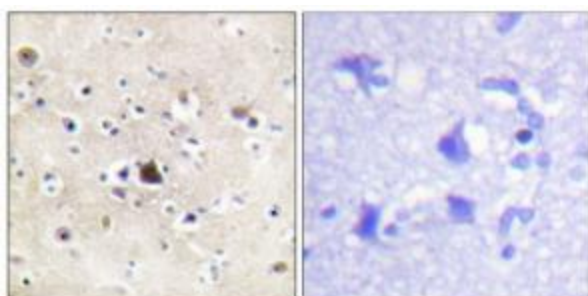
Product images:



Western blot analysis of extracts from Jurkat cells, treated with EGF (200ng/ml, 15mins), using GR (Ab-226) antibody (#TA313368).The lane on the right is treated with the synthesized peptide.



Western blot analysis of extracts from JK cells (Lane 2) and K562 cells (Lane 3), using GR (Ab-226) Antibody. The lane on the left is treated with synthesized peptide.



Immunohistochemical analysis of paraffin-embedded human brain tissue using GR (Ab-226) antibody (#TA313368)The picture on the right is treated with the synthesized peptide.