

Product datasheet for **TA313365**

CD61 (ITGB3) Rabbit Polyclonal Antibody

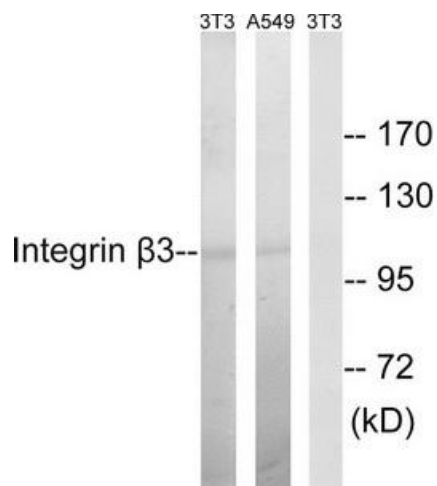
Product data:

Product Type:	Primary Antibodies
Applications:	IHC, WB
Recommended Dilution:	WB: 1:500~1:3000, IHC: 1:50~1:100, ELISA: 1:10000
Reactivity:	Human, Mouse
Host:	Rabbit
Isotype:	IgG
Clonality:	Polyclonal
Immunogen:	The antiserum was produced against synthesized non-phosphopeptide derived from human Integrin β 3 around the phosphorylation site of tyrosine 785 (I-T-YP-R-G).
Formulation:	Phosphate buffered saline (without Mg ²⁺ and Ca ²⁺), pH 7.4, 150mM NaCl, 0.02% sodium azide and 50% glycerol.
Concentration:	lot specific
Purification:	The antibody was affinity-purified from rabbit antiserum by affinity-chromatography using epitope-specific immunogen.
Conjugation:	Unconjugated
Storage:	Store at -20°C as received.
Stability:	Stable for 12 months from date of receipt.
Gene Name:	integrin subunit beta 3
Database Link:	NP_000203 Entrez Gene 16416 Mouse Entrez Gene 3690 Human P05106
Synonyms:	BDPLT2; BDPLT16; CD61; GP3A; GPIIIa; GT
Note:	Integrin .3 (Ab-785) antibody detects endogenous levels of total Integrin .3 protein.
Protein Families:	Druggable Genome, ES Cell Differentiation/IPS, Transmembrane
Protein Pathways:	Arrhythmogenic right ventricular cardiomyopathy (ARVC), Dilated cardiomyopathy, ECM-receptor interaction, Focal adhesion, Hematopoietic cell lineage, Hypertrophic cardiomyopathy (HCM), Regulation of actin cytoskeleton

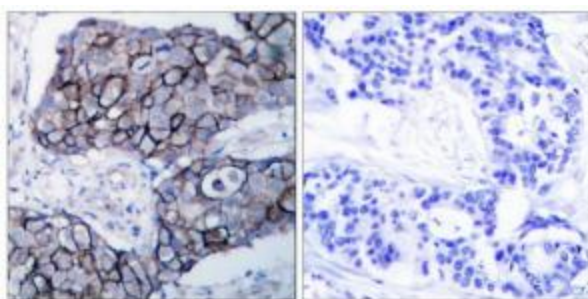


[View online »](#)

Product images:



Western blot analysis of extracts from NIH-3T3/A549 cells, using Integrin beta3 (Ab-785) Antibody. The lane on the right is treated with the synthesized peptide.



Immunohistochemistry analysis of paraffin-embedded human breast carcinoma tissue, using Integrin beta3 (Ab-785) Antibody. The picture on the right is treated with the synthesized peptide.