

Product datasheet for **TA313358**

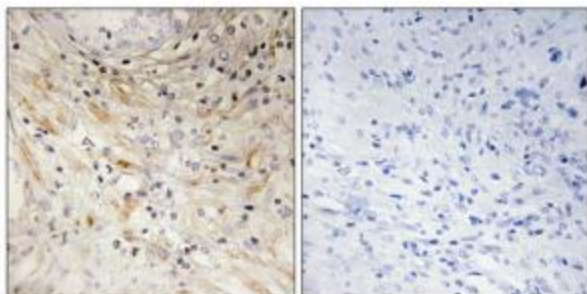
Laminin 5 (LAMB3) Rabbit Polyclonal Antibody

Product data:

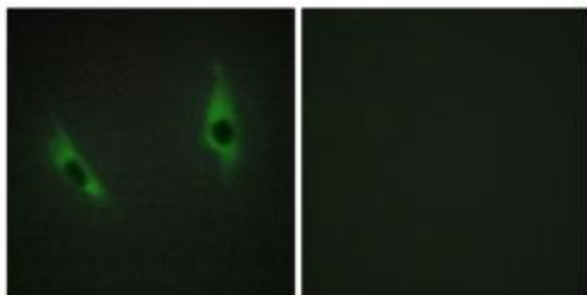
Product Type:	Primary Antibodies
Applications:	IF, IHC
Recommended Dilution:	IHC: 1:50~1:100, IF: 1:100~1:500, ELISA: 1:5000
Reactivity:	Human
Host:	Rabbit
Isotype:	IgG
Clonality:	Polyclonal
Immunogen:	The antiserum was produced against synthesized peptide derived from internal of human LAMB3.
Formulation:	Phosphate buffered saline (without Mg ²⁺ and Ca ²⁺), pH 7.4, 150mM NaCl, 0.02% sodium azide and 50% glycerol.
Concentration:	lot specific
Purification:	The antibody was affinity-purified from rabbit antiserum by affinity-chromatography using epitope-specific immunogen.
Conjugation:	Unconjugated
Storage:	Store at -20°C as received.
Stability:	Stable for 12 months from date of receipt.
Gene Name:	laminin subunit beta 3
Database Link:	NP_000219 Entrez Gene 3914 Human Q13751
Synonyms:	A11A; BM600-125KDA; LAM5; LAMNB1
Note:	LAMB3 antibody detects endogenous levels of total LAMB3 protein.
Protein Families:	Druggable Genome, Secreted Protein
Protein Pathways:	ECM-receptor interaction, Focal adhesion, Pathways in cancer, Small cell lung cancer



[View online »](#)

Product images:

Immunohistochemistry analysis of paraffin-embedded human prostate carcinoma tissue using LAMB3 antibody. The picture on the right is treated with the synthesized peptide.



Immunofluorescence analysis of HeLa cells, using LAMB3 antibody. The picture on the right is treated with the synthesized peptide.