

Product datasheet for **TA313352**

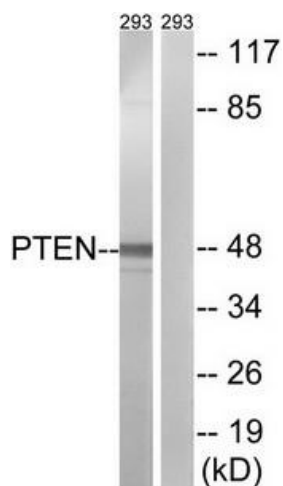
PTEN Rabbit Polyclonal Antibody

Product data:

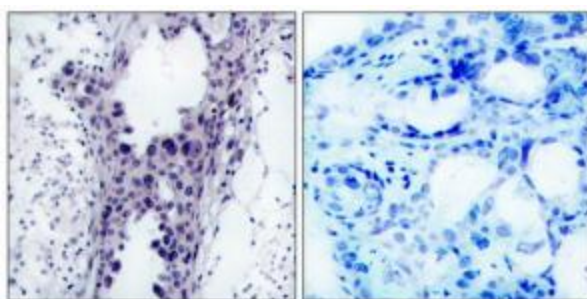
Product Type:	Primary Antibodies
Applications:	IHC, WB
Recommended Dilution:	WB: 1:500~1:3000, IHC:1:50~100, ELISA: 1:20000
Reactivity:	Human, Mouse, Rat
Host:	Rabbit
Isotype:	IgG
Clonality:	Polyclonal
Immunogen:	The antiserum was produced against synthesized non-phosphopeptide derived from human PTEN around the phosphorylation site of Serine 380 and Threonine 382/383.
Formulation:	Phosphate buffered saline (without Mg ²⁺ and Ca ²⁺), pH 7.4, 150mM NaCl, 0.02% sodium azide and 50% glycerol.
Concentration:	lot specific
Purification:	The antibody was affinity-purified from rabbit antiserum by affinity-chromatography using epitope-specific immunogen.
Conjugation:	Unconjugated
Storage:	Store at -20°C as received.
Stability:	Stable for 12 months from date of receipt.
Gene Name:	phosphatase and tensin homolog
Database Link:	NP_000305 Entrez Gene 19211 Mouse Entrez Gene 50557 Rat Entrez Gene 5728 Human P60484
Synonyms:	10q23del; BZS; CWS1; DEC; GLM2; MHAM; MMAC1; PTEN1; TEP1
Note:	PTEN (Ab-380/382/383) Antibody detects endogenous levels of total PTEN protein.
Protein Families:	Druggable Genome, Phosphatase
Protein Pathways:	Endometrial cancer, Focal adhesion, Glioma, Inositol phosphate metabolism, Melanoma, p53 signaling pathway, Pathways in cancer, Phosphatidylinositol signaling system, Prostate cancer, Small cell lung cancer, Tight junction



[View online »](#)

Product images:

Western blot analysis of extracts from 293 cells, using PTEN (Ab-380/382/383) Antibody. The lane on the right is treated with the synthesized peptide.



Immunohistochemistry analysis of paraffin-embedded human breast carcinoma tissue, using PTEN (Ab-380/382/383) Antibody. The picture on the right is treated with the synthesized peptide.