

Product datasheet for **TA313341**

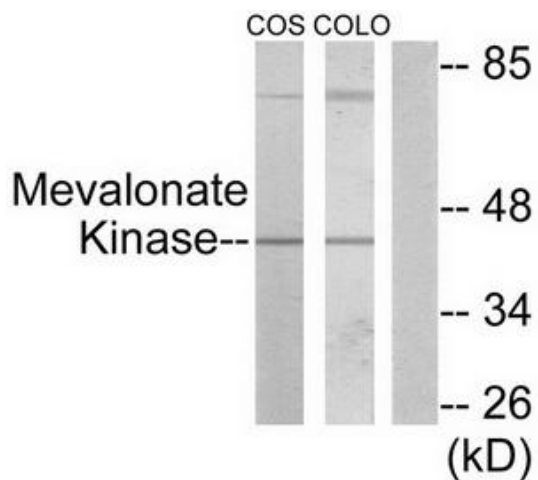
MVK Rabbit Polyclonal Antibody

Product data:

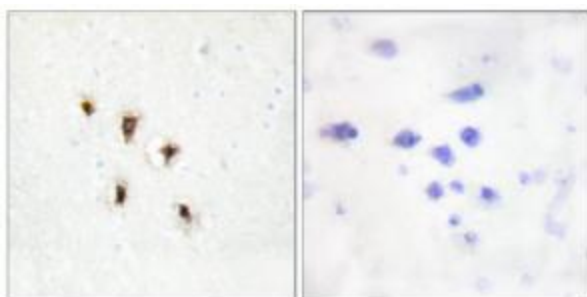
Product Type:	Primary Antibodies
Applications:	IHC, WB
Recommended Dilution:	WB: 1:500~1:3000, IHC: 1:50~1:100, ELISA: 1:10000
Reactivity:	Human
Host:	Rabbit
Isotype:	IgG
Clonality:	Polyclonal
Immunogen:	The antiserum was produced against synthesized peptide derived from internal of human Mevalonate Kinase.
Formulation:	Phosphate buffered saline (without Mg ²⁺ and Ca ²⁺), pH 7.4, 150mM NaCl, 0.02% sodium azide and 50% glycerol.
Concentration:	lot specific
Purification:	The antibody was affinity-purified from rabbit antiserum by affinity-chromatography using epitope-specific immunogen.
Conjugation:	Unconjugated
Storage:	Store at -20°C as received.
Stability:	Stable for 12 months from date of receipt.
Gene Name:	mevalonate kinase
Database Link:	NP_000422 Entrez Gene 4598 Human Q03426
Synonyms:	LRBP; MK; MVLK; POROK3
Note:	Mevalonate Kinase antibody detects endogenous levels of total Mevalonate Kinase protein.
Protein Families:	Druggable Genome
Protein Pathways:	Metabolic pathways, Terpenoid backbone biosynthesis



[View online »](#)

Product images:

Western blot analysis of extracts from COS-7 cells and COLO205 cells, using Mevalonate Kinase antibody. The lane on the right is treated with the synthesized peptide.



Immunohistochemistry analysis of paraffin-embedded human brain tissue using Mevalonate Kinase antibody. The picture on the right is treated with the synthesized peptide.