

Product datasheet for **TA313339**

CD31 (PECAM1) Rabbit Polyclonal Antibody

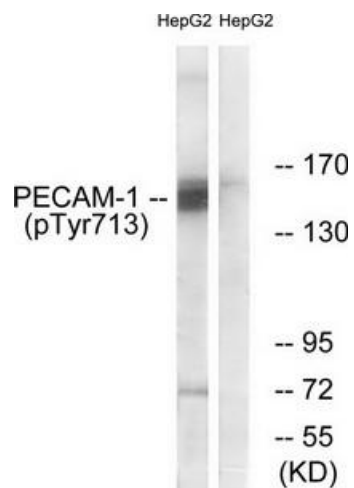
Product data:

Product Type:	Primary Antibodies
Applications:	IF, WB
Recommended Dilution:	WB: 1:500~1:3000, IF: 1:100~1:500, ELISA: 1:20000
Reactivity:	Human, Mouse
Modifications:	Phospho-specific
Host:	Rabbit
Isotype:	IgG
Clonality:	Polyclonal
Immunogen:	The antiserum was produced against synthesized phosphopeptide derived from human PECAM-1 around the phosphorylation site of tyrosine 713 (T-V-YP-S-E).
Formulation:	Phosphate buffered saline (without Mg ²⁺ and Ca ²⁺), pH 7.4, 150mM NaCl, 0.02% sodium azide and 50% glycerol.
Concentration:	lot specific
Purification:	The antibody was affinity-purified from rabbit antiserum by affinity-chromatography using epitope-specific immunogen.
Conjugation:	Unconjugated
Storage:	Store at -20°C as received.
Stability:	Stable for 12 months from date of receipt.
Gene Name:	platelet and endothelial cell adhesion molecule 1
Database Link:	NP_000433 Entrez Gene 18613 Mouse Entrez Gene 5175 Human P16284
Synonyms:	CD31; EndoCAM; endoCAM; GPIIA; PECA1; PECAM-1
Note:	PECAM-1 (Phospho-Tyr713) antibody detects endogenous levels of PECAM-1 only when phosphorylated at tyrosine 713.
Protein Families:	Druggable Genome, ES Cell Differentiation/IPS, Transmembrane
Protein Pathways:	Cell adhesion molecules (CAMs), Leukocyte transendothelial migration

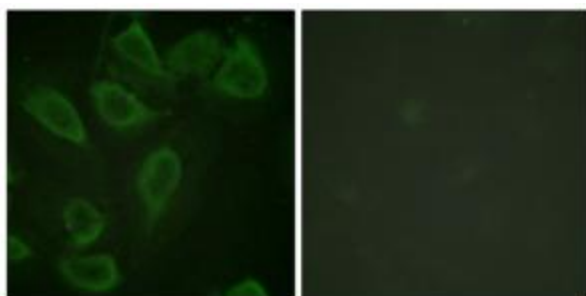


[View online »](#)

Product images:



Western blot analysis of extracts from HepG2 cells, using PECAM-1 (Phospho-Tyr713) antibody. The lane on the right is treated with the synthesized peptide.



Immunofluorescence analysis of HeLa cells, using PECAM-1 (Phospho-Tyr713) antibody. The picture on the right is treated with the synthesized peptide.