

Product datasheet for **TA313338**

CD31 (PECAM1) Rabbit Polyclonal Antibody

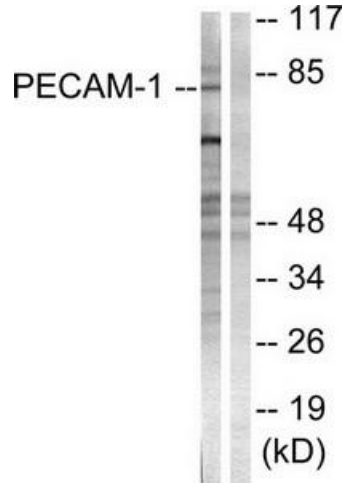
Product data:

Product Type:	Primary Antibodies
Applications:	IF, IHC, WB
Recommended Dilution:	WB: 1:500~1:3000, IHC: 1:50~1:100, IF: 1:100~1:500, ELISA: 1:20000
Reactivity:	Human, Mouse
Host:	Rabbit
Isotype:	IgG
Clonality:	Polyclonal
Immunogen:	The antiserum was produced against synthesized non-phosphopeptide derived from human PECAM-1 around the phosphorylation site of tyrosine 713 (T-V-YP-S-E).
Formulation:	Phosphate buffered saline (without Mg ²⁺ and Ca ²⁺), pH 7.4, 150mM NaCl, 0.02% sodium azide and 50% glycerol.
Concentration:	lot specific
Purification:	The antibody was affinity-purified from rabbit antiserum by affinity-chromatography using epitope-specific immunogen.
Conjugation:	Unconjugated
Storage:	Store at -20°C as received.
Stability:	Stable for 12 months from date of receipt.
Gene Name:	platelet and endothelial cell adhesion molecule 1
Database Link:	NP_000433 Entrez Gene 18613 Mouse Entrez Gene 5175 Human P16284
Synonyms:	CD31; EndoCAM; endoCAM; GPIIA; PECA1; PECAM-1
Note:	PECAM-1 (Ab-713) antibody detects endogenous levels of total PECAM-1 protein.
Protein Families:	Druggable Genome, ES Cell Differentiation/IPS, Transmembrane
Protein Pathways:	Cell adhesion molecules (CAMs), Leukocyte transendothelial migration

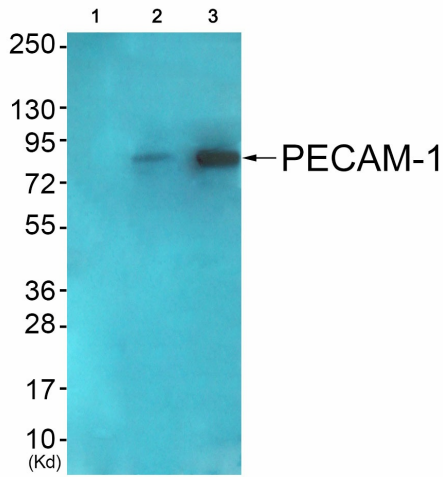


[View online »](#)

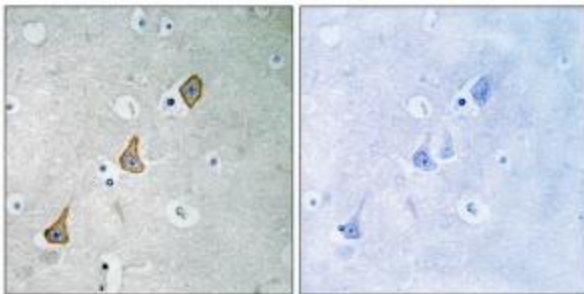
Product images:



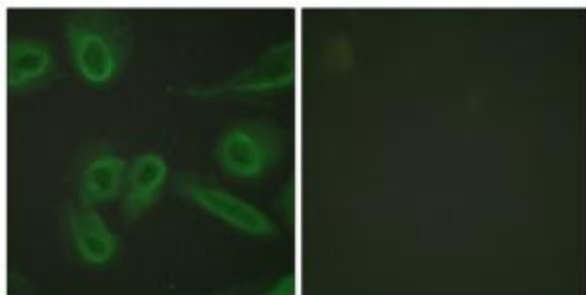
Western blot analysis of extracts from Jurkat cells, using PECAM-1 (Ab-713) antibody. The lane on the right is treated with the synthesized peptide.



Western blot analysis of extracts from COS7 cells (Lane 2) and JK cells (Lane 3), using PECAM-1 (Ab-713) Antibody. The lane on the left is treated with synthesized peptide.



Immunohistochemistry analysis of paraffin-embedded human brain tissue using PECAM-1 (Ab-713) antibody. The picture on the right is treated with the synthesized peptide.



Immunofluorescence analysis of HeLa cells, using PECAM-1 (Ab-713) antibody. The picture on the right is treated with the synthesized peptide.