

Product datasheet for **TA313337**

LKB1 (STK11) Rabbit Polyclonal Antibody

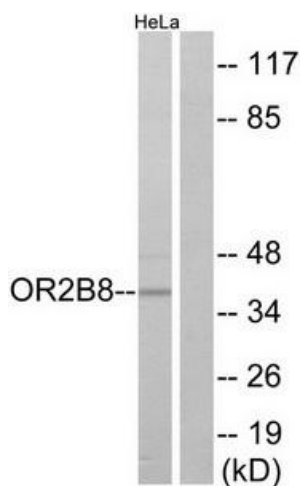
Product data:

Product Type:	Primary Antibodies
Applications:	WB
Recommended Dilution:	WB: 1:500~1:3000, ELISA: 1:20000
Reactivity:	Human
Host:	Rabbit
Isotype:	IgG
Clonality:	Polyclonal
Immunogen:	The antiserum was produced against synthesized peptide derived from internal of human OR2B8.
Formulation:	Phosphate buffered saline (without Mg ²⁺ and Ca ²⁺), pH 7.4, 150mM NaCl, 0.02% sodium azide and 50% glycerol.
Concentration:	lot specific
Purification:	The antibody was affinity-purified from rabbit antiserum by affinity-chromatography using epitope-specific immunogen.
Conjugation:	Unconjugated
Storage:	Store at -20°C as received.
Stability:	Stable for 12 months from date of receipt.
Gene Name:	serine/threonine kinase 11
Database Link:	NP_000446 Entrez Gene 6794 Human Q15831
Synonyms:	hLKB1; LKB1; PJS
Note:	OR2B8 antibody detects endogenous levels of total OR2B8 protein.
Protein Families:	Druggable Genome, Protein Kinase
Protein Pathways:	Adipocytokine signaling pathway, mTOR signaling pathway



[View online »](#)

Product images:



Western blot analysis of extracts from HeLa cells, using OR2B8 antibody. The lane on the right is treated with the synthesized peptide.