

Product datasheet for **TA313334**

TIE2 (TEK) Rabbit Polyclonal Antibody

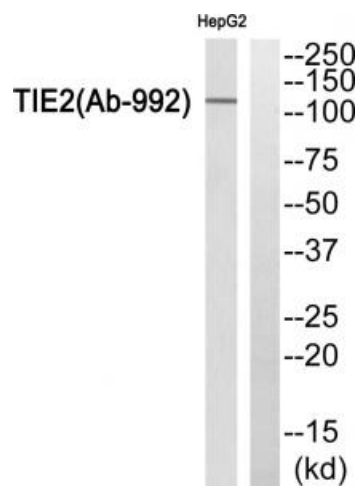
Product data:

Product Type:	Primary Antibodies
Applications:	WB
Recommended Dilution:	WB: 1:500~1:3000, ELISA: 1:10000
Reactivity:	Human, Mouse
Host:	Rabbit
Isotype:	IgG
Clonality:	Polyclonal
Immunogen:	The antiserum was produced against synthesized peptide derived from C-terminal of human TIE2.
Formulation:	Phosphate buffered saline (without Mg ²⁺ and Ca ²⁺), pH 7.4, 150mM NaCl, 0.02% sodium azide and 50% glycerol.
Concentration:	lot specific
Purification:	The antibody was affinity-purified from rabbit antiserum by affinity-chromatography using epitope-specific immunogen.
Conjugation:	Unconjugated
Storage:	Store at -20°C as received.
Stability:	Stable for 12 months from date of receipt.
Gene Name:	TEK receptor tyrosine kinase
Database Link:	NP_000450 Entrez Gene 21687 Mouse Entrez Gene 7010 Human Q02763
Synonyms:	CD202B; TIE-2; TIE2; VMCM; VMCM1
Note:	TIE2 (Ab-992) antibody detects endogenous levels of total TIE2 protein.
Protein Families:	Druggable Genome, ES Cell Differentiation/IPS, Protein Kinase, Transmembrane



[View online »](#)

Product images:



Western blot analysis of extracts from HepG2 cells, using TIE2 (Ab-992) antibody. The lane on the right is treated with the synthesized peptide.