

Product datasheet for **TA313333**

TIE2 (TEK) Rabbit Polyclonal Antibody

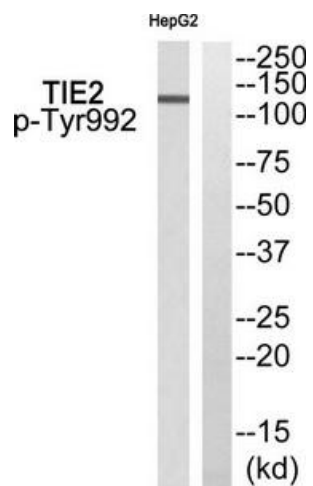
Product data:

Product Type:	Primary Antibodies
Applications:	WB
Recommended Dilution:	WB: 1:500~1:3000, ELISA: 1:10000
Modifications:	Phospho-specific
Host:	Rabbit
Isotype:	IgG
Clonality:	Polyclonal
Immunogen:	The antiserum was produced against synthesized phosphopeptide derived from human TIE2 around the phosphorylation site of Tyr992.
Formulation:	Phosphate buffered saline (without Mg ²⁺ and Ca ²⁺), pH 7.4, 150mM NaCl, 0.02% sodium azide and 50% glycerol.
Concentration:	lot specific
Purification:	The antibody was affinity-purified from rabbit antiserum by affinity-chromatography using epitope-specific immunogen.
Conjugation:	Unconjugated
Storage:	Store at -20°C as received.
Stability:	Stable for 12 months from date of receipt.
Gene Name:	TEK receptor tyrosine kinase
Database Link:	NP_000450 Entrez Gene 7010 Human Q02763
Synonyms:	CD202B; TIE-2; TIE2; VMCM; VMCM1
Note:	TIE2 (Phospho-Tyr992) Antibody detects endogenous levels of TIE2 only when phosphorylated at Tyr992.
Protein Families:	Druggable Genome, ES Cell Differentiation/IPS, Protein Kinase, Transmembrane



[View online »](#)

Product images:



Western blot analysis of extracts from HepG2, using TIE2 (Phospho-Tyr992) Antibody. The lane on the right is treated with the synthesized peptide.