

Product datasheet for TA313324

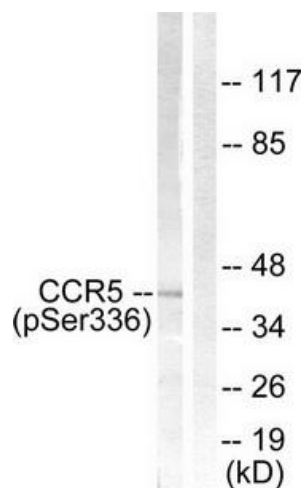
CCR5 Rabbit Polyclonal Antibody

Product data:

Product Type:	Primary Antibodies
Applications:	WB
Recommended Dilution:	WB: 1:500~1:3000, ELISA: 1:5000
Reactivity:	Human, Mouse, Rat
Modifications:	Phospho-specific
Host:	Rabbit
Isotype:	IgG
Clonality:	Polyclonal
Immunogen:	The antiserum was produced against synthesized phosphopeptide derived from human CCR5 around the phosphorylation site of serine 336 (R-A-SP-S-V).
Formulation:	Phosphate buffered saline (without Mg ²⁺ and Ca ²⁺), pH 7.4, 150mM NaCl, 0.02% sodium azide and 50% glycerol.
Concentration:	lot specific
Purification:	The antibody was affinity-purified from rabbit antiserum by affinity-chromatography using epitope-specific immunogen.
Conjugation:	Unconjugated
Storage:	Store at -20°C as received.
Stability:	Stable for 12 months from date of receipt.
Gene Name:	C-C motif chemokine receptor 5 (gene/pseudogene)
Database Link:	NP_000570 Entrez Gene 12774 Mouse Entrez Gene 117029 Rat Entrez Gene 1234 Human P51681
Synonyms:	CC-CKR-5; CCCKR5; CCR-5; CD195; CKR-5; CKR5; CMKBR5; IDDM22
Note:	CCR5 (Phospho-Ser336) antibody detects endogenous levels of CCR5 only when phosphorylated at serine 336.
Protein Families:	Druggable Genome, ES Cell Differentiation/IPS, GPCR, Transmembrane
Protein Pathways:	Chemokine signaling pathway, Cytokine-cytokine receptor interaction, Endocytosis


[View online »](#)

Product images:



Western blot analysis of extracts from Jurkat cells, using CCR5 (Phospho-Ser336) antibody. The lane on the right is treated with the synthesized peptide.