

## Product datasheet for **TA313322**

### TNF alpha (TNF) Rabbit Polyclonal Antibody

#### Product data:

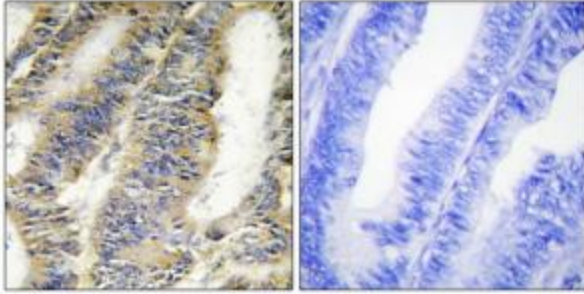
Product Type:	Primary Antibodies
Applications:	IF, IHC
Recommended Dilution:	IHC: 1:50~1:100, IF: 1:100~1:500, ELISA: 1:10000
Reactivity:	Human, Mouse, Rat
Host:	Rabbit
Isotype:	IgG
Clonality:	Polyclonal
Immunogen:	The antiserum was produced against synthesized peptide derived from internal of human TNFA.
Formulation:	Phosphate buffered saline (without Mg <sup>2+</sup> and Ca <sup>2+</sup> ), pH 7.4, 150mM NaCl, 0.02% sodium azide and 50% glycerol.
Concentration:	lot specific
Purification:	The antibody was affinity-purified from rabbit antiserum by affinity-chromatography using epitope-specific immunogen.
Conjugation:	Unconjugated
Storage:	Store at -20°C as received.
Stability:	Stable for 12 months from date of receipt.
Gene Name:	tumor necrosis factor
Database Link:	<a href="#">NP_000585</a> <a href="#">Entrez Gene 21926 Mouse</a> <a href="#">Entrez Gene 24835 Rat</a> <a href="#">Entrez Gene 7124 Human</a> <a href="#">P01375</a>
Synonyms:	DIF; TNF-alpha; TNFA; TNFSF2
Note:	TNFA antibody detects endogenous levels of total TNFA protein.
Protein Families:	Druggable Genome, Secreted Protein, Transcription Factors, Transmembrane



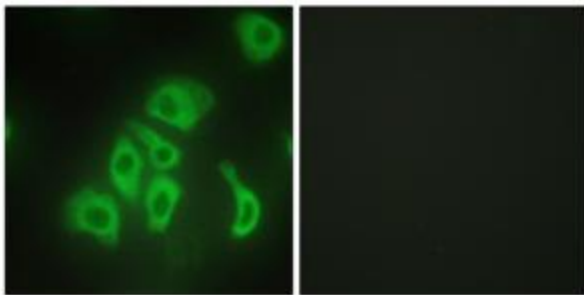
[View online »](#)

**Protein Pathways:**

Adipocytokine signaling pathway, Allograft rejection, Alzheimer's disease, Amyotrophic lateral sclerosis (ALS), Apoptosis, Asthma, Cytokine-cytokine receptor interaction, Dilated cardiomyopathy, Fc epsilon RI signaling pathway, Graft-versus-host disease, Hematopoietic cell lineage, Hypertrophic cardiomyopathy (HCM), MAPK signaling pathway, Natural killer cell mediated cytotoxicity, NOD-like receptor signaling pathway, RIG-I-like receptor signaling pathway, Systemic lupus erythematosus, T cell receptor signaling pathway, TGF-beta signaling pathway, Toll-like receptor signaling pathway, Type I diabetes mellitus, Type II diabetes mellitus

**Product images:**

Immunohistochemistry analysis of paraffin-embedded human colon carcinoma tissue, using TNFA antibody. The picture on the right is treated with the synthesized peptide.



Immunofluorescence analysis of HepG2 cells, using TNFA antibody. The picture on the right is treated with the synthesized peptide.