

Product datasheet for **TA313321**

IL4 Rabbit Polyclonal Antibody

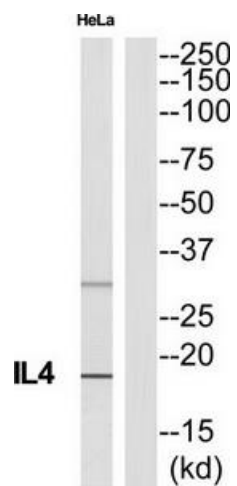
Product data:

Product Type:	Primary Antibodies
Applications:	WB
Recommended Dilution:	WB: 1:500~1:3000, ELISA: 1:1000
Reactivity:	Human
Host:	Rabbit
Isotype:	IgG
Clonality:	Polyclonal
Immunogen:	The antiserum was produced against synthesized peptide derived from C-terminal of human IL4.
Formulation:	Phosphate buffered saline (without Mg ²⁺ and Ca ²⁺), pH 7.4, 150mM NaCl, 0.02% sodium azide and 50% glycerol.
Concentration:	lot specific
Purification:	The antibody was affinity-purified from rabbit antiserum by affinity-chromatography using epitope-specific immunogen.
Conjugation:	Unconjugated
Storage:	Store at -20°C as received.
Stability:	Stable for 12 months from date of receipt.
Gene Name:	interleukin 4
Database Link:	NP_000580 Entrez Gene 3565 Human P05112
Synonyms:	BCGF-1; BCGF1; BSF-1; BSF1; IL-4
Note:	IL4 antibody detects endogenous levels of total IL4 protein.
Protein Families:	Druggable Genome, Secreted Protein
Protein Pathways:	Allograft rejection, Asthma, Autoimmune thyroid disease, Cytokine-cytokine receptor interaction, Fc epsilon RI signaling pathway, Hematopoietic cell lineage, Jak-STAT signaling pathway, T cell receptor signaling pathway



[View online »](#)

Product images:



Western blot analysis of extracts from HeLa cells, using IL4 antibody. The lane on the right is treated with the synthesized peptide.