

Product datasheet for **TA313319S**

TGF beta 1 (TGFB1) Rabbit Polyclonal Antibody

Product data:

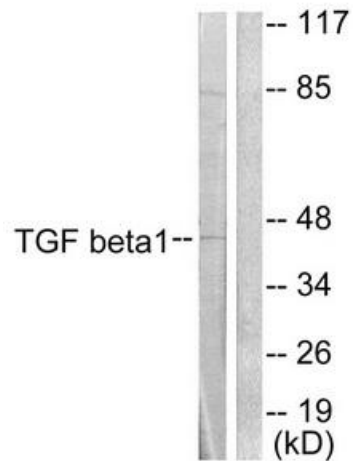
Product Type:	Primary Antibodies
Applications:	IHC, WB
Recommended Dilution:	WB: 1:500~1:3000, IHC: 1:50~1:100, ELISA: 1:5000
Reactivity:	Human, Mouse, Rat
Host:	Rabbit
Isotype:	IgG
Clonality:	Polyclonal
Immunogen:	The antiserum was produced against synthesized peptide derived from human TGF β 1 antibody.
Formulation:	Phosphate buffered saline (without Mg ²⁺ and Ca ²⁺), pH 7.4, 150mM NaCl, 0.02% sodium azide and 50% glycerol.
Concentration:	lot specific
Purification:	The antibody was affinity-purified from rabbit antiserum by affinity-chromatography using epitope-specific immunogen.
Conjugation:	Unconjugated
Storage:	Store at -20°C as received.
Stability:	Stable for 12 months from date of receipt.
Gene Name:	transforming growth factor beta 1
Database Link:	NP_000651 Entrez Gene 21803 Mouse Entrez Gene 59086 Rat Entrez Gene 7040 Human P01137
Synonyms:	CED; DPD1; LAP; TGFB; TGFbeta
Note:	TGF .1 antibody detects endogenous levels of total TGF .1 protein.
Protein Families:	Druggable Genome, ES Cell Differentiation/IPS, Secreted Protein, Transcription Factors



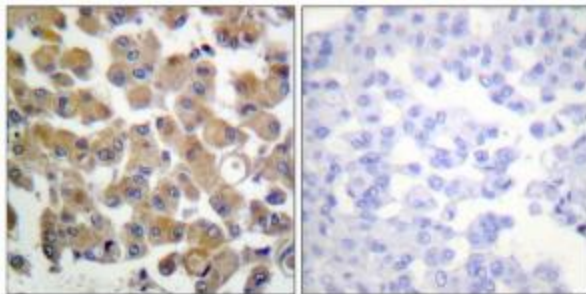
[View online »](#)

Protein Pathways:

Cell cycle, Chronic myeloid leukemia, Colorectal cancer, Cytokine-cytokine receptor interaction, Dilated cardiomyopathy, Hypertrophic cardiomyopathy (HCM), MAPK signaling pathway, Pancreatic cancer, Pathways in cancer, Renal cell carcinoma, TGF-beta signaling pathway

Product images:

Western blot analysis of extracts from HepG2 cells, using TGF β 1 antibody (#[TA313319]). The lane on the right is treated with the synthesized peptide.



Immunohistochemical analysis of paraffin-embedded human breast carcinoma tissue using TGF β 1 antibody (#[TA313319]). The picture on the right is treated with the synthesized peptide.