

## Product datasheet for **TA313317**

### alpha 2a Adrenergic Receptor (ADRA2A) Rabbit Polyclonal Antibody

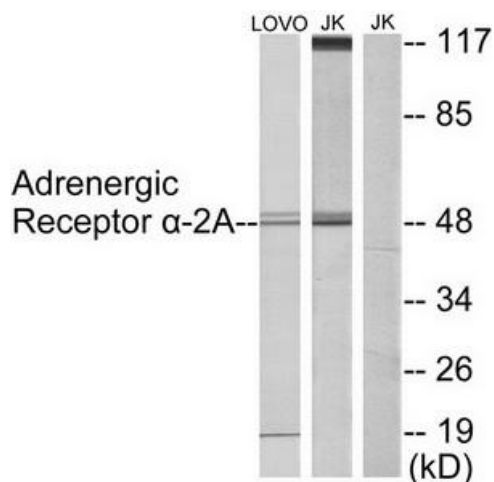
#### Product data:

Product Type:	Primary Antibodies
Applications:	IF, IHC, WB
Recommended Dilution:	WB: 1:500~1:3000, IHC: 1:50~1:100, IF: 1:100~1:500, ELISA: 1:20000
Reactivity:	Human, Mouse, Rat
Host:	Rabbit
Isotype:	IgG
Clonality:	Polyclonal
Immunogen:	The antiserum was produced against synthesized peptide derived from internal of human Adrenergic Receptor $\alpha$ -2A.
Formulation:	Phosphate buffered saline (without $Mg^{2+}$ and $Ca^{2+}$ ), pH 7.4, 150mM NaCl, 0.02% sodium azide and 50% glycerol.
Concentration:	lot specific
Purification:	The antibody was affinity-purified from rabbit antiserum by affinity-chromatography using epitope-specific immunogen.
Conjugation:	Unconjugated
Storage:	Store at $-20^{\circ}C$ as received.
Stability:	Stable for 12 months from date of receipt.
Gene Name:	adrenoceptor alpha 2A
Database Link:	<a href="#">NP_000672</a> <a href="#">Entrez Gene 11551 Mouse</a> <a href="#">Entrez Gene 25083 Rat</a> <a href="#">Entrez Gene 150 Human</a> <a href="#">P08913</a>
Synonyms:	ADRA2; ADRA2R; ADRAR; ALPHA2AAR; ZNF32
Note:	Adrenergic Receptor $\alpha$ -2A antibody detects endogenous levels of total Adrenergic Receptor $\alpha$ -2A protein.
Protein Families:	Druggable Genome, GPCR, Transmembrane
Protein Pathways:	Neuroactive ligand-receptor interaction

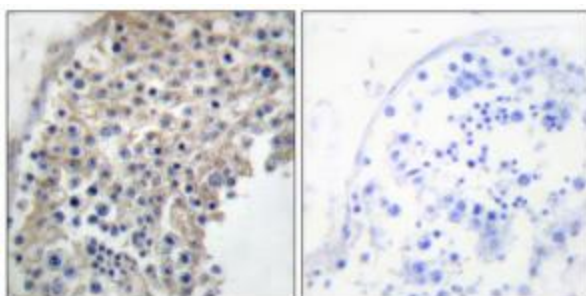


[View online »](#)

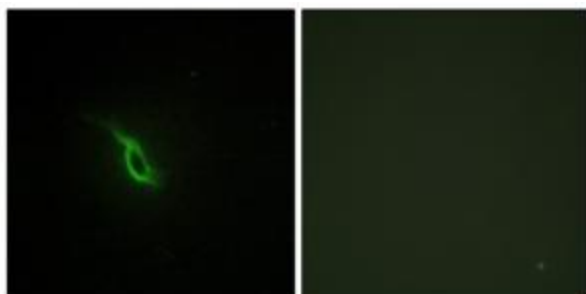
Product images:



Western blot analysis of extracts from LOVO cells and Jurkat cells, using Adrenergic Receptor a-2A antibody. The lane on the right is treated with the synthesized peptide.



Immunohistochemistry analysis of paraffin-embedded human testis tissue using Adrenergic Receptor a-2A antibody. The picture on the right is treated with the synthesized peptide.



Immunofluorescence analysis of NIH/3T3 cells, using Adrenergic Receptor a-2A antibody. The picture on the right is treated with the synthesized peptide.