

Product datasheet for **TA313315**

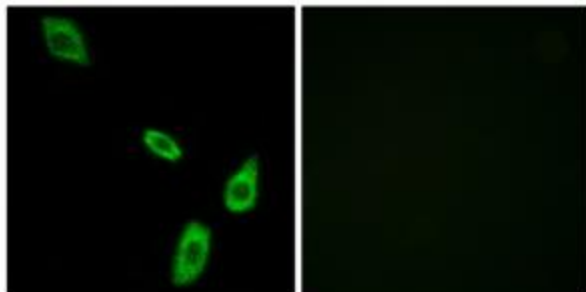
alpha 1b Adrenergic Receptor (ADRA1B) Rabbit Polyclonal Antibody

Product data:

Product Type:	Primary Antibodies
Applications:	IF
Recommended Dilution:	IF: 1:100~1:500, ELISA: 1:20000
Reactivity:	Human, Mouse, Rat
Host:	Rabbit
Isotype:	IgG
Clonality:	Polyclonal
Immunogen:	The antiserum was produced against synthesized peptide derived from internal of human ADRA1B.
Formulation:	Phosphate buffered saline (without Mg ²⁺ and Ca ²⁺), pH 7.4, 150mM NaCl, 0.02% sodium azide and 50% glycerol.
Concentration:	lot specific
Purification:	The antibody was affinity-purified from rabbit antiserum by affinity-chromatography using epitope-specific immunogen.
Conjugation:	Unconjugated
Storage:	Store at -20°C as received.
Stability:	Stable for 12 months from date of receipt.
Gene Name:	adrenoceptor alpha 1B
Database Link:	NP_000670 Entrez Gene 11548 Mouse Entrez Gene 24173 Rat Entrez Gene 147 Human P35368
Synonyms:	ADRA1; ALPHA1BAR
Note:	ADRA1B antibody detects endogenous levels of total ADRA1B protein.
Protein Families:	Druggable Genome, GPCR, Transmembrane
Protein Pathways:	Calcium signaling pathway, Neuroactive ligand-receptor interaction, Vascular smooth muscle contraction



[View online »](#)

Product images:

Immunofluorescence analysis of LOVO cells, using ADRA1B antibody. The picture on the right is treated with the synthesized peptide.