

Product datasheet for **TA313314**

Annexin A1 (ANXA1) Rabbit Polyclonal Antibody

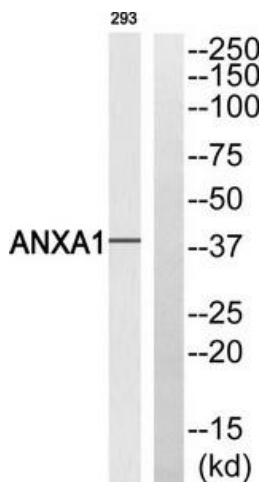
Product data:

Product Type:	Primary Antibodies
Applications:	WB
Recommended Dilution:	WB: 1:500~1:3000, ELISA: 1:20000
Reactivity:	Human
Host:	Rabbit
Isotype:	IgG
Clonality:	Polyclonal
Immunogen:	The antiserum was produced against synthesized non-phosphopeptide derived from human ANXA1 around the phosphorylation site of tyrosine 21 (Q-E-YP-V-Q).
Formulation:	Phosphate buffered saline (without Mg ²⁺ and Ca ²⁺), pH 7.4, 150mM NaCl, 0.02% sodium azide and 50% glycerol.
Concentration:	lot specific
Purification:	The antibody was affinity-purified from rabbit antiserum by affinity-chromatography using epitope-specific immunogen.
Conjugation:	Unconjugated
Storage:	Store at -20°C as received.
Stability:	Stable for 12 months from date of receipt.
Gene Name:	annexin A1
Database Link:	NP_000691 Entrez Gene 301 Human P04083
Synonyms:	ANX1; LPC1
Note:	ANXA1 (Ab-21) antibody detects endogenous levels of total ANXA1 protein.
Protein Families:	Druggable Genome

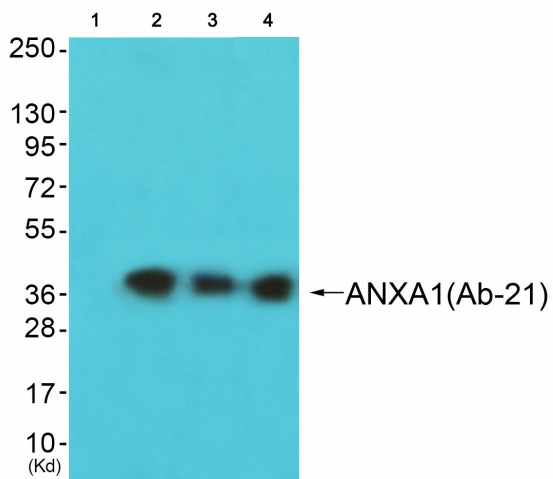


[View online »](#)

Product images:



Western blot analysis of extracts from 293 cells, using ANXA1 (Ab-21) antibody. The lane on the right is treated with the synthesized peptide.



Western blot analysis of extracts from JK cells (Lane 2), K562 cells (Lane 3) and 293 cells (Lane 4), using ANXA1 (Ab-21) Antibody. The lane on the left is treated with synthesized peptide.