

Product datasheet for **TA313312**

Cytochrome P450 2A6 (CYP2A6) Rabbit Polyclonal Antibody

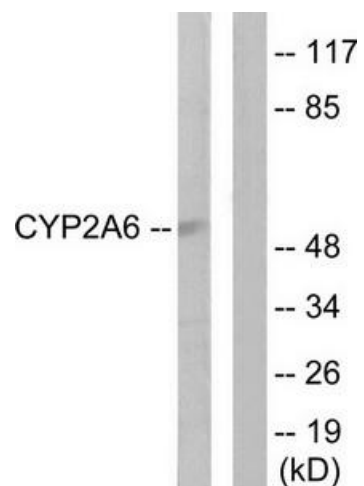
Product data:

Product Type:	Primary Antibodies
Applications:	WB
Recommended Dilution:	WB: 1:500~1:3000, ELISA: 1:20000
Reactivity:	Human
Host:	Rabbit
Isotype:	IgG
Clonality:	Polyclonal
Immunogen:	The antiserum was produced against synthesized peptide derived from N-terminal of human Cytochrome P450 2A6.
Formulation:	Phosphate buffered saline (without Mg ²⁺ and Ca ²⁺), pH 7.4, 150mM NaCl, 0.02% sodium azide and 50% glycerol.
Concentration:	lot specific
Purification:	The antibody was affinity-purified from rabbit antiserum by affinity-chromatography using epitope-specific immunogen.
Conjugation:	Unconjugated
Storage:	Store at -20°C as received.
Stability:	Stable for 12 months from date of receipt.
Gene Name:	cytochrome P450 family 2 subfamily A member 6
Database Link:	NP_000753 Entrez Gene 1548 Human P11509
Synonyms:	CPA6; CYP2A; CYP2A3; CYP11A6; P450C2A; P450PB
Note:	Cytochrome P450 2A6 antibody detects endogenous levels of total Cytochrome P450 2A6 protein.
Protein Families:	Druggable Genome, P450, Transmembrane
Protein Pathways:	Caffeine metabolism, Drug metabolism - cytochrome P450, Drug metabolism - other enzymes, Metabolic pathways, Retinol metabolism



[View online »](#)

Product images:



Western blot analysis of extracts from Jurkat cells, using Cytochrome P450 2A6 antibody. The lane on the right is treated with the synthesized peptide.