

Product datasheet for **TA313311**

Cytochrome P450 1A2 (CYP1A2) Rabbit Polyclonal Antibody

Product data:

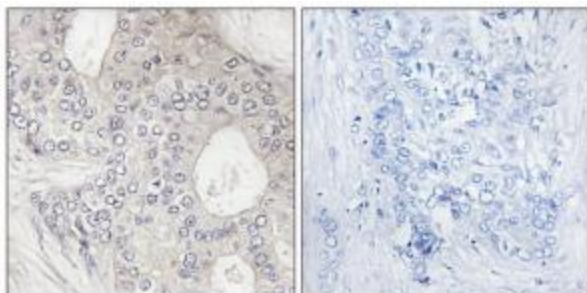
Product Type:	Primary Antibodies
Applications:	IHC
Recommended Dilution:	IHC: 1:50~1:100, ELISA: 1:5000
Reactivity:	Human, Mouse, Rat
Host:	Rabbit
Isotype:	IgG
Clonality:	Polyclonal
Immunogen:	The antiserum was produced against synthesized peptide derived from internal of human Cytochrome P450 1A2.
Formulation:	Phosphate buffered saline (without Mg ²⁺ and Ca ²⁺), pH 7.4, 150mM NaCl, 0.02% sodium azide and 50% glycerol.
Concentration:	lot specific
Purification:	The antibody was affinity-purified from rabbit antiserum by affinity-chromatography using epitope-specific immunogen.
Conjugation:	Unconjugated
Storage:	Store at -20°C as received.
Stability:	Stable for 12 months from date of receipt.
Gene Name:	cytochrome P450 family 1 subfamily A member 2
Database Link:	NP_000752 Entrez Gene 13077 Mouse Entrez Gene 24297 Rat Entrez Gene 1544 Human P05177
Synonyms:	CP12; P3-450; P450(PA)
Note:	Cytochrome P450 1A2 antibody detects endogenous levels of total Cytochrome P450 1A2 protein.
Protein Families:	Druggable Genome, P450, Transmembrane



[View online »](#)

Protein Pathways: Caffeine metabolism, Drug metabolism - cytochrome P450, Linoleic acid metabolism, Metabolic pathways, Metabolism of xenobiotics by cytochrome P450, Retinol metabolism, Tryptophan metabolism

Product images:



Immunohistochemistry analysis of paraffin-embedded human brain tissue using Cytochrome P450 1A2 antibody. The picture on the right is treated with the synthesized peptide.