

## Product datasheet for **TA313310**

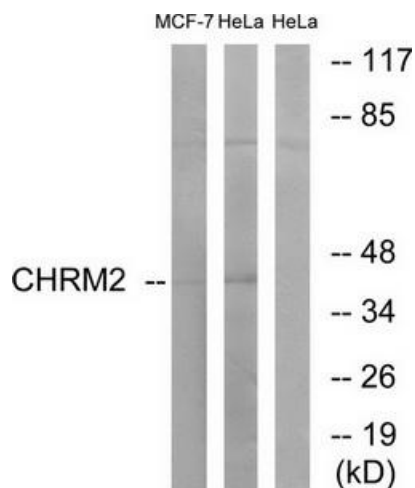
### CHRM2 Rabbit Polyclonal Antibody

#### Product data:

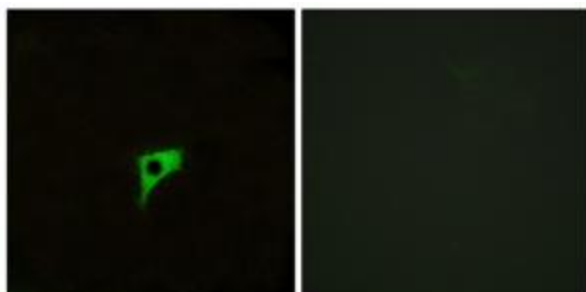
Product Type:	Primary Antibodies
Applications:	IF, WB
Recommended Dilution:	WB: 1:500~1:3000, IF: 1:100~1:500, ELISA: 1:5000
Reactivity:	Human, Mouse, Rat
Host:	Rabbit
Isotype:	IgG
Clonality:	Polyclonal
Immunogen:	The antiserum was produced against synthesized peptide derived from internal of human CHRM2.
Formulation:	Phosphate buffered saline (without Mg <sup>2+</sup> and Ca <sup>2+</sup> ), pH 7.4, 150mM NaCl, 0.02% sodium azide and 50% glycerol.
Concentration:	lot specific
Purification:	The antibody was affinity-purified from rabbit antiserum by affinity-chromatography using epitope-specific immunogen.
Conjugation:	Unconjugated
Storage:	Store at -20°C as received.
Stability:	Stable for 12 months from date of receipt.
Gene Name:	cholinergic receptor muscarinic 2
Database Link:	<a href="#">NP_000730</a> <a href="#">Entrez Gene 81645 Rat</a> <a href="#">Entrez Gene 243764 Mouse</a> <a href="#">Entrez Gene 1129 Human</a> <a href="#">P08172</a>
Synonyms:	HM2
Note:	CHRM2 antibody detects endogenous levels of total CHRM2 protein.
Protein Families:	Druggable Genome, GPCR, Transmembrane
Protein Pathways:	Calcium signaling pathway, Neuroactive ligand-receptor interaction, Regulation of actin cytoskeleton



[View online »](#)

**Product images:**


Western blot analysis of extracts from MCF-7 cells and HeLa cells, using CHRM2 antibody. The lane on the right is treated with the synthesized peptide.



Immunofluorescence analysis of LOVO cells, using CHRM2 antibody. The picture on the right is treated with the synthesized peptide.