

Product datasheet for **TA313309**

Cytochrome p450 2J2 (CYP2J2) Rabbit Polyclonal Antibody

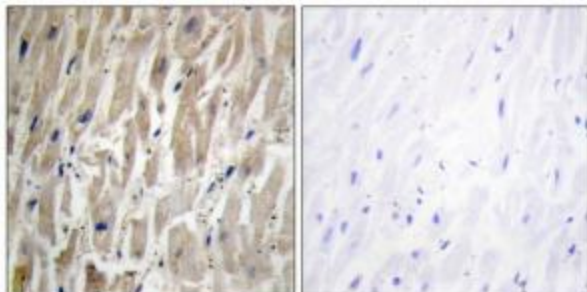
Product data:

Product Type:	Primary Antibodies
Applications:	IF, IHC, WB
Recommended Dilution:	WB: 1:500~1:3000, IHC: 1:50~1:100, IF: 1:100~1:500, ELISA: 1:10000
Reactivity:	Human
Host:	Rabbit
Isotype:	IgG
Clonality:	Polyclonal
Immunogen:	The antiserum was produced against synthesized peptide derived from internal of human Cytochrome P450 2J2.
Formulation:	Phosphate buffered saline (without Mg ²⁺ and Ca ²⁺), pH 7.4, 150mM NaCl, 0.02% sodium azide and 50% glycerol.
Concentration:	lot specific
Purification:	The antibody was affinity-purified from rabbit antiserum by affinity-chromatography using epitope-specific immunogen.
Conjugation:	Unconjugated
Storage:	Store at -20°C as received.
Stability:	Stable for 12 months from date of receipt.
Gene Name:	cytochrome P450 family 2 subfamily J member 2
Database Link:	NP_000766 Entrez Gene 1573 Human P51589
Synonyms:	CPJ2
Note:	Cytochrome P450 2J2 antibody detects endogenous levels of total Cytochrome P450 2J2 protein.
Protein Families:	Druggable Genome, P450, Transmembrane
Protein Pathways:	Arachidonic acid metabolism, Linoleic acid metabolism, Metabolic pathways

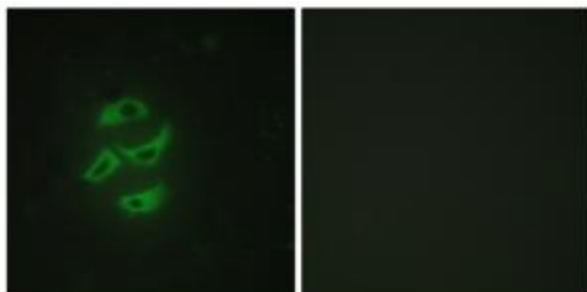


[View online »](#)

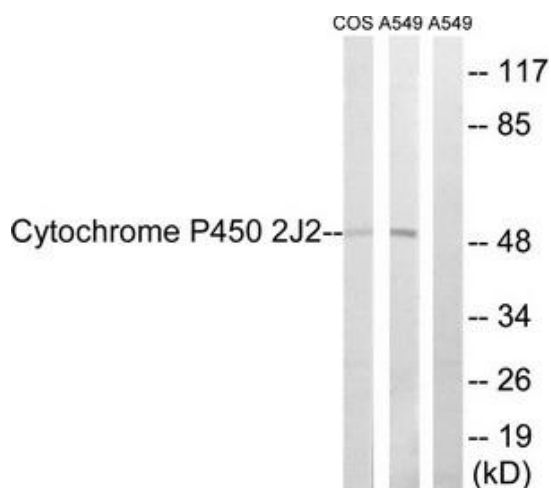
Product images:



Immunohistochemistry analysis of paraffin-embedded human heart tissue using Cytochrome P450 2J2 antibody. The picture on the right is treated with the synthesized peptide.



Immunofluorescence analysis of HepG2 cells, using Cytochrome P450 2J2 antibody. The picture on the right is treated with the synthesized peptide.



Western blot analysis of extracts from A549 cells, RAW264.7 cells and NIH-3T3 cells, using Cytochrome P450 2J2 antibody. The lane on the right is treated with the synthesized peptide.