

Product datasheet for **TA313304**

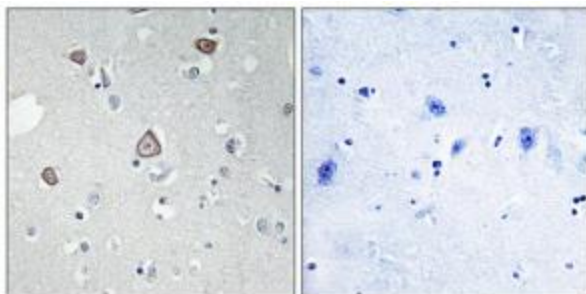
Metabotropic Glutamate Receptor 2 (GRM2) Rabbit Polyclonal Antibody

Product data:

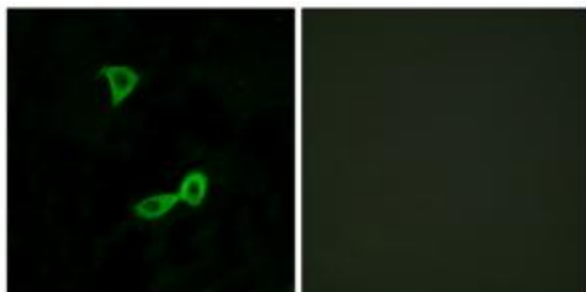
| | |
|-----------------------|--|
| Product Type: | Primary Antibodies |
| Applications: | IF, IHC |
| Recommended Dilution: | IHC: 1:50~1:100, IF: 1:100~1:500, ELISA: 1:1000 |
| Reactivity: | Human, Mouse, Rat |
| Host: | Rabbit |
| Isotype: | IgG |
| Clonality: | Polyclonal |
| Immunogen: | The antiserum was produced against synthesized peptide derived from internal of human GRM2. |
| Formulation: | Phosphate buffered saline (without Mg ²⁺ and Ca ²⁺), pH 7.4, 150mM NaCl, 0.02% sodium azide and 50% glycerol. |
| Concentration: | lot specific |
| Purification: | The antibody was affinity-purified from rabbit antiserum by affinity-chromatography using epitope-specific immunogen. |
| Conjugation: | Unconjugated |
| Storage: | Store at -20°C as received. |
| Stability: | Stable for 12 months from date of receipt. |
| Gene Name: | glutamate metabotropic receptor 2 |
| Database Link: | NP_000830 Entrez Gene 24415 Rat Entrez Gene 108068 Mouse Entrez Gene 2912 Human Q14416 |
| Synonyms: | GLUR2; GPRC1B; mGlu2; MGLUR2 |
| Note: | GRM2 antibody detects endogenous levels of total GRM2 protein. |
| Protein Families: | Druggable Genome, GPCR, Transmembrane |
| Protein Pathways: | Neuroactive ligand-receptor interaction |



[View online »](#)

Product images:

Immunohistochemistry analysis of paraffin-embedded human brain tissue using GRM2 antibody. The picture on the right is treated with the synthesized peptide.



Immunofluorescence analysis of LOVO cells, using GRM2 antibody. The picture on the right is treated with the synthesized peptide.