

Product datasheet for **TA313294**

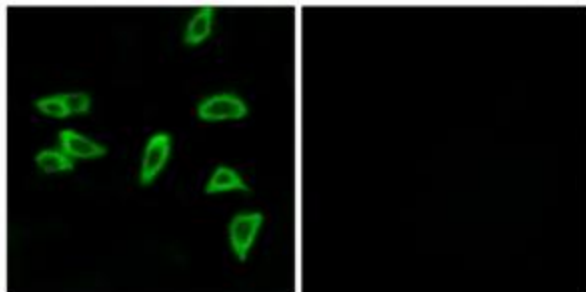
PTGER3 Rabbit Polyclonal Antibody

Product data:

Product Type:	Primary Antibodies
Applications:	IF
Recommended Dilution:	IF: 1:100~1:500, ELISA: 1:10000
Reactivity:	Human
Host:	Rabbit
Isotype:	IgG
Clonality:	Polyclonal
Immunogen:	The antiserum was produced against synthesized peptide derived from internal of human PTGER3.
Formulation:	Phosphate buffered saline (without Mg ²⁺ and Ca ²⁺), pH 7.4, 150mM NaCl, 0.02% sodium azide and 50% glycerol.
Concentration:	lot specific
Purification:	The antibody was affinity-purified from rabbit antiserum by affinity-chromatography using epitope-specific immunogen.
Conjugation:	Unconjugated
Storage:	Store at -20°C as received.
Stability:	Stable for 12 months from date of receipt.
Gene Name:	prostaglandin E receptor 3
Database Link:	NP_942013 Entrez Gene 5733 Human P43115
Synonyms:	EP3; EP3-I; EP3-II; EP3-III; EP3-IV; EP3e; MGC27302
Note:	PTGER3 antibody detects endogenous levels of total PTGER3 protein.
Protein Families:	Druggable Genome, GPCR, Transcription Factors, Transmembrane
Protein Pathways:	Calcium signaling pathway, Neuroactive ligand-receptor interaction



[View online »](#)

Product images:

Immunofluorescence analysis of LOVO cells, using PTGER3 antibody. The picture on the right is treated with the synthesized peptide.