

Product datasheet for **TA313293**

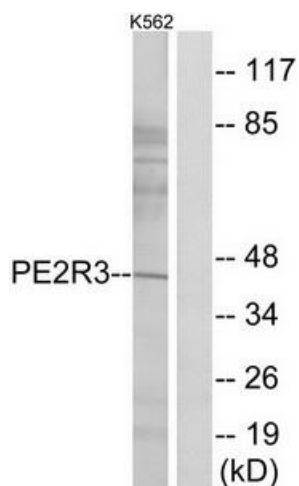
PTGER3 Rabbit Polyclonal Antibody

Product data:

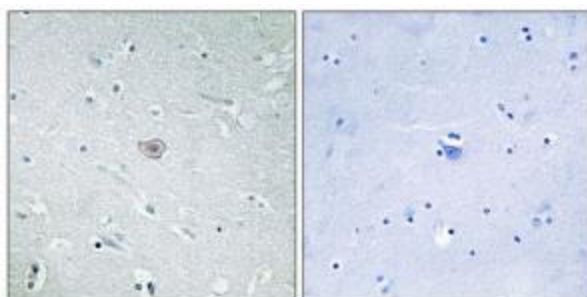
Product Type:	Primary Antibodies
Applications:	IF, IHC, WB
Recommended Dilution:	WB: 1:500~1:3000, IHC: 1:50~1:100, IF: 1:100~1:500, ELISA: 1:5000
Reactivity:	Human, Mouse, Rat
Host:	Rabbit
Isotype:	IgG
Clonality:	Polyclonal
Immunogen:	The antiserum was produced against synthesized peptide derived from internal of human PE2R3.
Formulation:	Phosphate buffered saline (without Mg ²⁺ and Ca ²⁺), pH 7.4, 150mM NaCl, 0.02% sodium azide and 50% glycerol.
Concentration:	lot specific
Purification:	The antibody was affinity-purified from rabbit antiserum by affinity-chromatography using epitope-specific immunogen.
Conjugation:	Unconjugated
Storage:	Store at -20°C as received.
Stability:	Stable for 12 months from date of receipt.
Gene Name:	prostaglandin E receptor 3
Database Link:	NP_000948 Entrez Gene 19218 Mouse Entrez Gene 24929 Rat Entrez Gene 5733 Human P43115
Synonyms:	EP3; EP3-I; EP3-II; EP3-III; EP3-IV; EP3e; MGC27302; MGC141828; MGC141829
Note:	PE2R3 antibody detects endogenous levels of total PE2R3 protein.
Protein Families:	Druggable Genome, GPCR, Transcription Factors, Transmembrane
Protein Pathways:	Calcium signaling pathway, Neuroactive ligand-receptor interaction



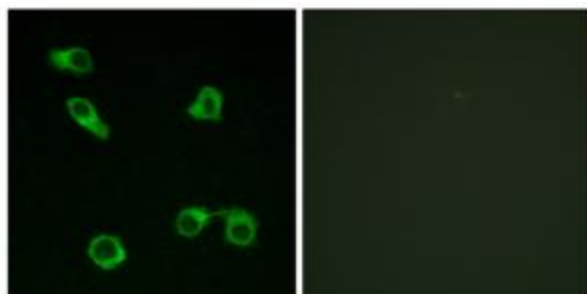
[View online »](#)

Product images:

Western blot analysis of extracts from K562 cells, using PE2R3 antibody. The lane on the right is treated with the synthesized peptide.



Immunohistochemistry analysis of paraffin-embedded human brain tissue using PE2R3 antibody. The picture on the right is treated with the synthesized peptide.



Immunofluorescence analysis of COS-7 cells, using PE2R3 antibody. The picture on the right is treated with the synthesized peptide.