

Product datasheet for **TA313290**

UBASH3A Rabbit Polyclonal Antibody

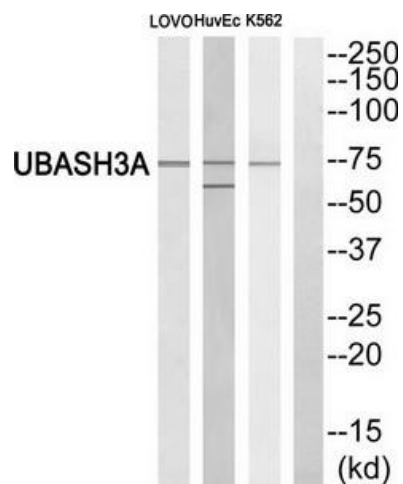
Product data:

Product Type:	Primary Antibodies
Applications:	WB
Recommended Dilution:	WB: 1:500~1:3000, ELISA: 1:1000
Reactivity:	Human
Host:	Rabbit
Isotype:	IgG
Clonality:	Polyclonal
Immunogen:	The antiserum was produced against synthesized peptide derived from internal of human UBASH3A.
Formulation:	Phosphate buffered saline (without Mg ²⁺ and Ca ²⁺), pH 7.4, 150mM NaCl, 0.02% sodium azide and 50% glycerol.
Concentration:	lot specific
Purification:	The antibody was affinity-purified from rabbit antiserum by affinity-chromatography using epitope-specific immunogen.
Conjugation:	Unconjugated
Storage:	Store at -20°C as received.
Stability:	Stable for 12 months from date of receipt.
Gene Name:	ubiquitin associated and SH3 domain containing A
Database Link:	NP_001001895 Entrez Gene 53347 Human P57075
Synonyms:	CLIP4; STS-2; TULA; TULA-1
Note:	UBASH3A antibody detects endogenous levels of total UBASH3A protein.
Protein Families:	Druggable Genome



[View online »](#)

Product images:



Western blot analysis of extracts from LOVO cells, HuvEc cells and K562 cells, using UBASH3A antibody. The lane on the right is treated with the synthesized peptide.