

Product datasheet for **TA313288**

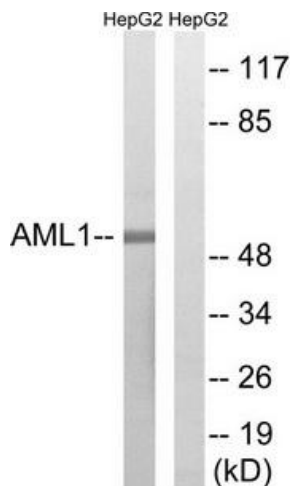
RUNX1 Rabbit Polyclonal Antibody

Product data:

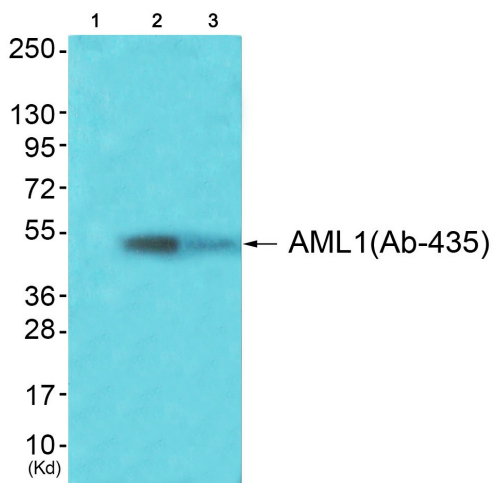
Product Type:	Primary Antibodies
Applications:	WB
Recommended Dilution:	WB: 1:500~1:3000, ELISA: 1:5000
Reactivity:	Human, Mouse, Rat
Host:	Rabbit
Isotype:	IgG
Clonality:	Polyclonal
Immunogen:	The antiserum was produced against synthesized non-phosphopeptide derived from human AML1 around the phosphorylation site of serine 435 (S-N-SP-P-T).
Formulation:	Phosphate buffered saline (without Mg ²⁺ and Ca ²⁺), pH 7.4, 150mM NaCl, 0.02% sodium azide and 50% glycerol.
Concentration:	lot specific
Purification:	The antibody was affinity-purified from rabbit antiserum by affinity-chromatography using epitope-specific immunogen.
Conjugation:	Unconjugated
Storage:	Store at -20°C as received.
Stability:	Stable for 12 months from date of receipt.
Gene Name:	runt related transcription factor 1
Database Link:	NP_001001890 Entrez Gene 12394 Mouse Entrez Gene 50662 Rat Entrez Gene 861 Human Q01196
Synonyms:	AML1; AML1-EVI-1; AMLCR1; CBFA2; EVI-1; PEBP2aB
Note:	AML1 (Ab-435) antibody detects endogenous levels of total AML1 protein.
Protein Families:	Druggable Genome, ES Cell Differentiation/IPS, Transcription Factors
Protein Pathways:	Acute myeloid leukemia, Chronic myeloid leukemia, Pathways in cancer



[View online »](#)

Product images:


Western blot analysis of extracts from HepG2 cells, treated with PMA (125ng/ml, 30mins), using AML1 (Ab-435) antibody. The lane on the right is treated with the synthesized peptide.



Western blot analysis of extracts from 293 cells (Lane 2) and HeLa cells (Lane 3), using AML1 (Ab-435) Antibody. The lane on the left is treated with synthesized peptide.