

Product datasheet for **TA313284**

GRK6 Rabbit Polyclonal Antibody

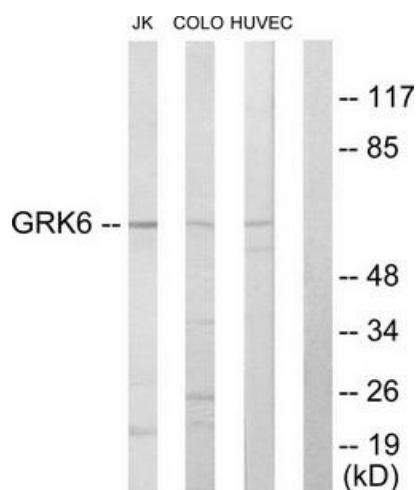
Product data:

Product Type:	Primary Antibodies
Applications:	IF, WB
Recommended Dilution:	WB: 1:500~1:3000, IF: 1:100~1:500, ELISA: 1:10000
Reactivity:	Human, Mouse, Rat
Host:	Rabbit
Isotype:	IgG
Clonality:	Polyclonal
Immunogen:	The antiserum was produced against synthesized peptide derived from N-terminal of human GRK6.
Formulation:	Phosphate buffered saline (without Mg ²⁺ and Ca ²⁺), pH 7.4, 150mM NaCl, 0.02% sodium azide and 50% glycerol.
Concentration:	lot specific
Purification:	The antibody was affinity-purified from rabbit antiserum by affinity-chromatography using epitope-specific immunogen.
Conjugation:	Unconjugated
Storage:	Store at -20°C as received.
Stability:	Stable for 12 months from date of receipt.
Gene Name:	G protein-coupled receptor kinase 6
Database Link:	NP_001004106 Entrez Gene 26385 Mouse Entrez Gene 59076 Rat Entrez Gene 2870 Human P43250
Synonyms:	GPRK6
Note:	GRK6 antibody detects endogenous levels of total GRK6 protein.
Protein Families:	Druggable Genome, Protein Kinase
Protein Pathways:	Chemokine signaling pathway, Endocytosis

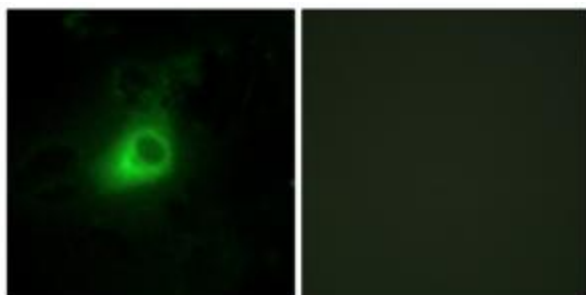


[View online »](#)

Product images:



Western blot analysis of extracts from Jurkat cells, COLO205 cells and HUVEC cells, using GRK6 antibody. The lane on the right is treated with the synthesized peptide.



Immunofluorescence analysis of HeLa cells, using GRK6 antibody. The picture on the right is treated with the synthesized peptide.