

Product datasheet for **TA313283**

RGS10 Rabbit Polyclonal Antibody

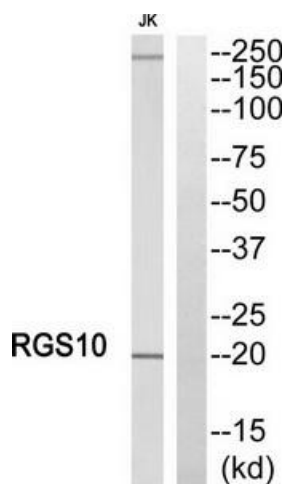
Product data:

Product Type:	Primary Antibodies
Applications:	WB
Recommended Dilution:	WB: 1:500~1:3000, ELISA: 1:10000
Reactivity:	Human, Mouse, Rat
Host:	Rabbit
Isotype:	IgG
Clonality:	Polyclonal
Immunogen:	The antiserum was produced against synthesized peptide derived from internal of human RGS10.
Formulation:	Phosphate buffered saline (without Mg ²⁺ and Ca ²⁺), pH 7.4, 150mM NaCl, 0.02% sodium azide and 50% glycerol.
Concentration:	lot specific
Purification:	The antibody was affinity-purified from rabbit antiserum by affinity-chromatography using epitope-specific immunogen.
Conjugation:	Unconjugated
Storage:	Store at -20°C as received.
Stability:	Stable for 12 months from date of receipt.
Gene Name:	regulator of G-protein signaling 10
Database Link:	NP_001005339 Entrez Gene 54290 Rat Entrez Gene 67865 Mouse Entrez Gene 6001 Human O43665
Synonyms:	OTTHUMP00000020597; OTTHUMP00000069158; regulator of G-protein signaling 10; regulator of G-protein signalling 10
Note:	RGS10 antibody detects endogenous levels of total RGS10 protein.



[View online »](#)

Product images:



Western blot analysis of extracts from Jurkat cells, using RGS10 antibody. The lane on the right is treated with the synthesized peptide.