

Product datasheet for **TA313281**

Sumo 2 (SUMO2) Rabbit Polyclonal Antibody

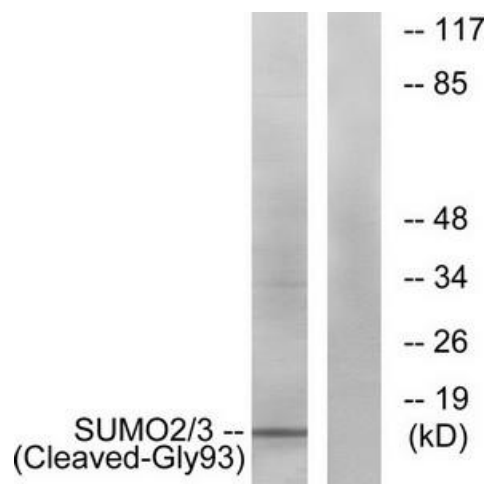
Product data:

Product Type:	Primary Antibodies
Applications:	WB
Recommended Dilution:	WB: 1:500~1:3000, ELISA: 1:20000
Reactivity:	Human, Mouse, Rat
Host:	Rabbit
Isotype:	IgG
Clonality:	Polyclonal
Immunogen:	The antiserum was produced against synthesized peptide derived from human SUMO2/3.
Formulation:	Phosphate buffered saline (without Mg ²⁺ and Ca ²⁺), pH 7.4, 150mM NaCl, 0.02% sodium azide and 50% glycerol.
Concentration:	lot specific
Purification:	The antibody was affinity-purified from rabbit antiserum by affinity-chromatography using epitope-specific immunogen.
Conjugation:	Unconjugated
Storage:	Store at -20°C as received.
Stability:	Stable for 12 months from date of receipt.
Gene Name:	small ubiquitin-like modifier 2
Database Link:	NP_001005849 Entrez Gene 170930 Mouse Entrez Gene 690244 Rat Entrez Gene 6613 Human P61956
Synonyms:	HSMT3; Smt3A; SMT3B; SMT3H2; SUMO3
Note:	SUMO2/3 (Cleaved-Gly93) antibody detects endogenous levels of fragment of activated SUMO2/3 resulting from cleavage adjacent to Gly93.
Protein Families:	Druggable Genome



[View online »](#)

Product images:



Western blot analysis of extracts from HeLa cells, using SUMO2/3 (Cleaved-Gly93) antibody. The lane on the right is treated with the synthesized peptide.