

Product datasheet for **TA313278**

Androgen Receptor (AR) Rabbit Polyclonal Antibody

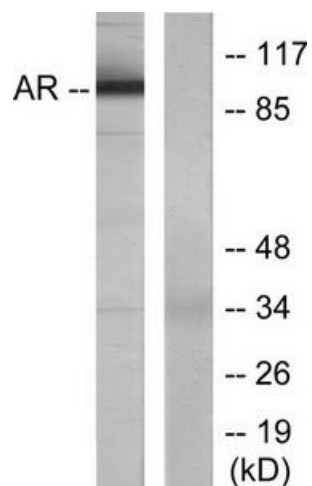
Product data:

Product Type:	Primary Antibodies
Applications:	IHC, WB
Recommended Dilution:	WB: 1:500~1:3000, IHC: 1:50~1:100, ELISA: 1:40000
Reactivity:	Human
Host:	Rabbit
Isotype:	IgG
Clonality:	Polyclonal
Immunogen:	The antiserum was produced against synthesized non-phosphopeptide derived from human Androgen Receptor around the phosphorylation site of serine 650 (T-T-SP-P-T).
Formulation:	Phosphate buffered saline (without Mg ²⁺ and Ca ²⁺), pH 7.4, 150mM NaCl, 0.02% sodium azide and 50% glycerol.
Concentration:	lot specific
Purification:	The antibody was affinity-purified from rabbit antiserum by affinity-chromatography using epitope-specific immunogen.
Conjugation:	Unconjugated
Storage:	Store at -20°C as received.
Stability:	Stable for 12 months from date of receipt.
Gene Name:	androgen receptor
Database Link:	NP_001011645 Entrez Gene 367 Human P10275
Synonyms:	AIS; AR8; DHTR; HUMARA; HYSY1; KD; NR3C4; SBMA; SMAX1; TFM
Note:	Androgen Receptor (Ab-650) antibody detects endogenous levels of total Androgen Receptor protein.
Protein Families:	Druggable Genome, Nuclear Hormone Receptor, Transcription Factors
Protein Pathways:	Oocyte meiosis, Pathways in cancer, Prostate cancer

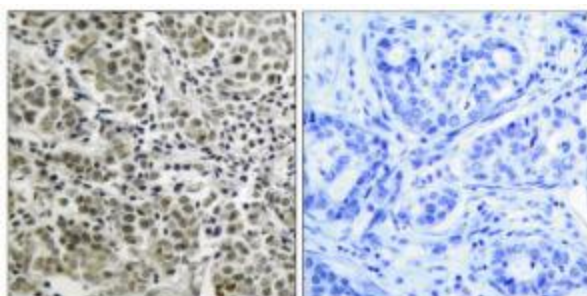


[View online »](#)

Product images:



Western blot analysis of extracts from LOVO cells, using Androgen Receptor (Ab-650) Antibody. The lane on the right is treated with the synthesized peptide.



Immunohistochemistry analysis of paraffin-embedded human prostate carcinoma tissue, using Androgen Receptor (Ab-650) Antibody. The picture on the right is treated with the synthesized peptide.